

TOGETHER WE CAN ACHIEVE MORE BECAUSE
E **BECAUSE** TOGETHER WE CAN ACHIEVE MORE
CAN ACHIEVE MORE BECAUSE TOGETHER WE
IER WE CAN ACHIEVE MORE BECAUSE TOGET
CAUSE TOGETHER WE CAN ACHIEVE MORE B
GETHER WE CAN ACHIEVE MORE BECAUSE T
CAN ACHIEVE MORE BECAUSE **TOGETHER** W
SE TOGETHER WE CAN ACHIEVE MORE BECA
IER **WE** CAN ACHIEVE MORE BECAUSE TOGET
CAUSE TOGETHER WE CAN ACHIEVE MORE B
GETHER WE CAN ACHIEVE MORE BECAUSE T
VE MORE BECAUSE TOGETHER WE **CAN** ACHI
SE TOGETHER WE CAN ACHIEVE MORE BECA
IER WE CAN ACHIEVE MORE BECAUSE TOGET
CAUSE TOGETHER WE CAN ACHIEVE MORE B
N **ACHIEVE** MORE BECAUSE TOGETHER WE CA
THER WE CAN ACHIEVE MORE BECAUSE TOG
SE TOGETHER WE CAN ACHIEVE **MORE** BECA
IER WE CAN ACHIEVE MORE BECAUSE TOGET
CAUSE TOGETHER WE CAN ACHIEVE MORE B
GETHER WE CAN ACHIEVE MORE BECAUSE T

2012

ANNUAL REVIEW



Exceptional People. Exceptional Care.

INTRODUCTION

Mater has a rich history of collaboration. It began in 1906 when the Sisters of Mercy worked closely with the Brisbane community and their donors to build a hospital which would help the sick and needy.

As Mater grew to seven hospitals, so did the need for greater support. In more recent times, a foundation to help raise funds for Mater and a research institute were established.

With this, our collaborative approach grew, locally, nationally and internationally.

Now as a team of more than 7500 people, we are unified by our commitment to help others. In this digital world we are not only connected locally through our facilities in Queensland, but as an organisation we've also built connections across the globe in healthcare—working as one to meet community need both locally and abroad.

BECAUSE, TOGETHER WE CAN ACHIEVE MORE.

To learn more about how Mater collaborates with the community visit www.mater.org.au

OUR MISSION

In the spirit of the Sisters of Mercy, Mater Health Services offers compassionate service to the sick and needy, promotes a holistic approach to healthcare in response to changing community needs and fosters high standards in health-related education and research.

Following the example of Christ the healer, we commit ourselves to offering these services to all without discrimination.

OUR VALUES

Mater staff are dedicated to providing the highest quality healthcare services through a sincere commitment to Mater's core values of Mercy, Dignity, Care, Commitment and Quality. Through these values Mater staff promote the professionalism and care that has been a part of Mater since its beginnings.

MERCY

The spirit of responding to one another.

DIGNITY

The spirit of humanity, respecting the worth of each person.

CARE

The spirit of compassion.

COMMITMENT

The spirit of integrity.

QUALITY

The spirit of professionalism.

CONTENTS

INTRODUCTION

02

MESSAGES

05

YEAR IN REVIEW

09



LOOKING AHEAD TO 2013

10

COLLABORATION

11

UNIFICATION

27

MATER PEOPLE

45

MATER REPORTS

59



MERCY AND MATER

ARE SYNONYMOUS

For more than 106 years Mater Misericordiae Hospitals, now known as Mater Health Services Brisbane, have expressed Mercy through continuing the healing ministry of Jesus.

In 2008 the Sisters of Mercy in Queensland set up a Catholic Church entity called Mercy Partners to assume responsibility for their Ministries into the future. Mercy Partners is a Public Juridic Person (PJP) meaning it has both Catholic Church and Civil legal status.

In April 2013 the Sisters of Mercy Brisbane will transfer Mater Health Services to Mercy Partners. What does this mean? It means that Mater Health Services Brisbane remains a Ministry of the Catholic Church within the Mercy tradition for the future. The governance of Mater Health Services remains with the Board of Directors and ownership of the incorporated company Mater Health Services Brisbane Ltd transfers from the Sisters of Mercy to Mercy Partners. This is also the opportune time for the Sisters of Mercy Leadership Team, who have been the members of the company of Mater Medical Research Institute Ltd and Mater Foundation, to pass the membership (ownership) of these companies to the Board of Mater Health Services Brisbane Ltd.

By transferring our Ministries to Mercy Partners the Sisters of Mercy have ensured that these Ministries are conducted in the name of the Catholic Church and that the healthcare offered remains within Mercy Values that find expression in policy and practice. It means that there is continuing opportunity to respond compassionately and creatively to existing and emerging needs within communities. The Health and Aged Care Ministries of the Sisters of Mercy in Rockhampton and Townsville were transferred to Mercy Partners in 2011 and 2012. Mercy Partners also provides a pathway in the Catholic Church for canonical leadership of Ministries by lay people.

As we come to the close of one era of Mercy we begin a new moment in Mercy history, confident that God's providential guidance is with us.

SISTER SANDRA LUPI RSM
CONGREGATION LEADER
SISTERS OF MERCY, BRISBANE



At the end of 2012 we took time to reflect on Mater's rich history. Though we have celebrated more than a century of innovation, some things have not changed at Mater. We remain a core part of the health system in Queensland, an institution of life-changing collaboration, unification in the face of health hardship and joy, and of course home to the exceptional people who make up Mater.

Mater is more than a place to work—it's a family. In 2012 colleagues and friends have departed, some happily into promotional opportunities or retirement, others regrettably due to illness or personal tragedy. Notably, I'd like to mention the retirement of former Chair of the Mater Board Prof John McAuliffe, Dr Frank Crimmins, former Executive Director Clinical Support Services Dr Julie Hudson and former Executive Director Adult, Women's and Children's Health Services Dr Mark Waters, all of whom in their own way have given so much to the Mater community.

With Prof McAuliffe's departure, we welcome the new Chairman of the Board, Mr Brian Flannery—a face familiar at Mater, who has been Director and Deputy Chair of the Mater Health Services Board since 2001.

Our people are not all that changes, as an organisation our outlook has changed too, becoming ever more future-focused. This year we continued to prepare for our transition of paediatric services to the Queensland Children's Hospital in 2014. With the transition of Mater Children's Hospital, Mater is expanding our cancer services in 2013 and further developing adolescent health services. We will also continue to work with the State Government to deliver healthcare in Queensland, not only on children's health but on enterprise agreements for our staff and building new relationships with the newly formed Queensland Health Boards. It has been a challenging time, and it's just getting started.

In 2012 Mater established new services in Hope Island, expanded pathology services to Brisbane's northside and pioneered treatment for babies and adults. We broke Australian records in the community, climbed new heights at Mt Kilimanjaro and provided care to Queensland's most disadvantaged people.

Whatever the next 12 months bring, we can be assured that if we continue to work together positively and collaboratively and stay focused on the needs and hopes of our patients—that Mater's Mission will continue to roll on throughout 2013 and beyond.

DR JOHN O'DONNELL
CHIEF EXECUTIVE OFFICER, MATER HEALTH SERVICES

BRIAN FLANNERY
CHAIRMAN, MATER HEALTH SERVICES BOARD

BECAUSE
TOGETHER
WE CAN ACHIEVE MORE





The theme of this year's annual review is collaboration and 2012 was certainly a year which saw our supporters, volunteers and staff working together to make a difference in our community.

Behind every Mater success story is a group of individuals working to improve the lives of others. In 2012, with the support of the community, Mater Research continued to push the boundaries of medical science.

In the lab, researchers continued their contribution to the global fight against prostate cancer; while out in the community, our supporters climbed mountains, grew facial hair and jumped from planes in order to raise money for this important cause.

It is this collaborative approach to fundraising and research which sees us achieving great things.

Often it is the smallest deeds that give rise to our greatest legacies. Like that of Mark 'Sharky' Smoothy, who, after losing his best friend Adam to an aggressive melanoma in 2006, decided to cycle 1600 kms from Brisbane to Townsville, as a tribute to his mate. It was at that moment that Smiling for Smiddy was born.

Seven years on, Smiling for Smiddy now includes more than eight challenge events in Australia and

overseas, from cycling challenges in the French Alps, to Ironman and triathlon events at home.

By working together and challenging themselves, Smiddy supporters have raised more than \$3 million toward research into melanoma, prostate, breast and ovarian cancers as well as complementary therapies for cancer patients.

In 2012, we also acknowledged former Mater Foundation Board member and known philanthropist George Pippas. George was a successful businessman who dedicated his life to helping those in his community. The George Pippas Memorial Fund will ensure his legacy lives on, funding critical healthcare and medical research projects while serving as a valuable reminder of what we can achieve when we work together.

In the 2011/12 financial year Mater Foundation recorded a surplus of \$6 116 366 and we distributed more than \$6 424 137 in grants to Mater.

We are privileged to witness the ways in which Mater staff, supporters and volunteers continue to work together, with compassion and determination, to better the lives of current and future Queenslanders.

**BECAUSE TOGETHER,
WE CAN ACHIEVE MORE.**

MR PHIL HENNESSY
CHAIRMAN, MATER FOUNDATION

MR NIGEL HARRIS
EXECUTIVE DIRECTOR, MATER FOUNDATION



Research is such a collaborative field and Mater has always been a keen collaborator.

Since the establishment of Mater Medical Research Institute in 1998, we've worked closely with Mater clinicians to deliver on our bench to bedside philosophy. Now with more than 200 laboratory and clinical researchers, Mater Research is connecting with hospitals and institutes all over the world to achieve research excellence.

In 2011 we fully realised our goal to integrate research with clinical practice at Mater. In 2012, this was tested when we continued our collaborative streak and joined forces with the newly-established Translational Research Institute—an Australian-first initiative, bringing together 650 researchers from four of Queensland's leading institutes. This has increased our focus to continue connecting with Mater. Remaining connected to the doctors, nurses and midwives at Mater is imperative for Mater Research.

PROFESSOR IAN ZIMMER
CHAIRMAN, MATER RESEARCH BOARD

BECAUSE, TOGETHER WE CAN ACHIEVE MORE.

As well as establishing this important connection with the Translational Research Institute, Mater Research also published more than 200 papers in leading clinical and scientific journals this year, which enables researchers and scientists from all over the world to learn from our discoveries. And of course, we've been busy behind the microscope—establishing the first Mater Ovarian Cancer Collaborative and securing important funding and fellowships to tackle cancer prevention and treatment.

We would like to thank the Mater Research Board of Directors, the Sisters of Mercy, Mater and our staff for their support and guidance this year. Without them, we could not have provided the strong research outcomes for our patients and the community.

PROFESSOR JOHN PRINS
CEO/DIRECTOR, MATER RESEARCH



YEAR IN REVIEW

IN 2012, MATER ...

- Delivered more than 10 000 babies.
- Partnered with Translational Research Institute for more collaborative research.
- Expanded our services to Hope Island with the opening of the new Mater Health Centre Hope Island.
- Launched a new midwifery simulation centre for educational purposes.
- Successfully rolled out a new payroll system.
- Set the Australian record for the most expectant women in one place, at one time.
- Raised more than \$7.5 million for our patients, research, equipment and care at Mater.
- Celebrated twenty years of volunteer services at Mater.
- Reduced our general and clinical waste by half.

LOOKING TO 2013

IN 2013, MATER WILL ...

- Establish a new model of cancer services at Mater.
- Further develop adolescent health services.
- Launch a range of midwife-endorsed maternity products.
- Conduct leading-edge laboratory research at Translational Research Institute.
- Expand our services to the Springfield community, with the opening of Mater Health Centre Brookwater.
- Introduce new fundraising approaches for breast and ovarian cancer research.





COLLABORATION

MATER HAS A RICH HISTORY OF COLLABORATION, BEGINNING IN 1906 WHEN THE SISTERS OF MERCY WORKED WITH THE LOCAL COMMUNITY AND HEALTH PROFESSIONALS TO BUILD A HOSPITAL.

TODAY, OUR DOCTORS, NURSES, MIDWIVES AND RESEARCHERS COLLABORATE WITH EACH OTHER, AND OTHER HEALTHCARE FACILITIES LOCALLY AND ABROAD, TO DELIVER INTEGRATED CARE TO OUR COMMUNITY.



BECAUSE
TOGETHER
WE CAN ACHIEVE MORE



MATER PERFORMS WORLD FIRST

IN OCTOBER, MATER CARDIOTHORACIC SURGEON PROFESSOR TOM KARL PERFORMED THE WORLD'S FIRST OPEN-HEART SURGERY USING A NEW PATCH WHICH MIMICS HUMAN TISSUE TO FIX CONGENITAL HEART DEFECTS IN CHILDREN.

Professor Karl was the first surgeon in the world to receive approval to use the 'CardioCel' patches, which are expected to add significant value to the treatment of heart defects, allowing patients to live a 'normal' life, free of implanted tissue-related complications.

Professor Karl's cardiac theatre team performed three surgeries using the patch during its launch week, with all patients recovering well.

The CardioCel patches, developed by Australian company Allied Healthcare, have multiple potential advantages over existing techniques, including a greatly reduced risk of calcification or toxic cell damage.

In Australia, eight babies in every 1 000 are born with congenital heart defects, and with more patients now living until adulthood, lifelong solutions are required.

MATER PIONEERS PROBIOTIC THERAPY FOR NEONATES

Approximately one-in-four babies weighing under 1500 g and almost one-in-two babies weighing under 1000 g will die as a result of developing necrotising enterocolitis (NEC); a severe bowel condition.

Mater's Neonatal Critical Care Unit is now one of the first hospitals in Australia to treat premature babies at risk of developing the potentially fatal bowel condition with the probiotic Infloran.

Studies of preterm babies show that probiotics halve the risk of a baby developing NEC and dying. They have also been shown to improve feed tolerance and reduce the time it takes to get to full feeds in preterm babies, as probiotics protect the gut from bad bacteria and boost the immune system.

A recent meta-analysis, which included more than 2800 babies, reported that for every 20-25 babies treated with probiotics, one less will develop NEC or die. On the basis of this and other studies, Mater has been collaborating to translate the research on this treatment into clinical practice.

The probiotic is mixed into a small amount of expressed breast milk or formula and provided to babies via their feeding tubes once a day until a baby reaches 36 weeks gestational age.

HAND HYGIENE HITS RECORD HIGH

Mater's *SafeQuest* is an organisational-wide program focused on improving safety in healthcare for patients, staff and visitors. The program includes safety initiatives, risk management strategies and education programs for issues such as staff immunisation, pressure injury and falls prevention, medication safety and hand hygiene.

An example of *SafeQuest's* success is the improvements made in staff hand hygiene compliance. Mater consistently exceeds the national target of 70 per cent compliance set by the Australian Commission on Safety and Quality in Healthcare across all hospitals. This result improved by almost 10 per cent in 2012 across the majority of Mater hospitals peaking at 80 per cent overall compliance at the end of the year.



SOME AREAS OF MATER ACHIEVED
80% HAND HYGIENE
COMPLIANCE
THAT'S 10% ABOVE
THE NATIONAL TARGET





COLLABORATING FOR STRONGER RESEARCH

MATER RESEARCH HAS A RICH HISTORY OF COLLABORATION, INTEGRATING WITH MATER CLINICIANS ON A RANGE OF STUDIES. IN THE PAST FEW YEARS THE INSTITUTE HAS WORKED HARD TO ENMESH ITS RESEARCH WITH MATER'S CLINICAL SERVICES TO PROVIDE BETTER OUTCOMES FOR PATIENTS AND THE WIDER COMMUNITY.

Mater Research took its collaborative tradition one step further in 2012 forming part of the Translational Research Institute (TRI), an industry-leading 'think tank' of collaborative minds which launched this year at the Princess Alexandra Hospital.

Led by Professor Ian Frazer, AC, as CEO and Director of Research, TRI brings together the best and brightest minds from Mater Research, The University of Queensland Diamantina Institute, Queensland University of Technology Institute of Health and Biomedical Innovation and Princess Alexandra Hospital Centres for Health Research.

Destined to be one of the largest medical research institutes in the southern hemisphere, TRI was formed to exchange ideas on life-changing therapeutics and treatments and will house an educational facility in the fields of medicine and science. Like Mater Research, TRI is committed to a 'bench to bedside' model, enabling collaborative research in which new treatments can be developed and tested by establishing and modelling the genetic and environmental basis of human disease.

Forming part of TRI will further strengthen Mater's track record for collaboration, and our researchers will share knowledge and expertise with hundreds of researchers under one roof, providing stronger outcomes for research locally, nationally and internationally.





The new Translational Research Institute, located at Woolloongabba, is destined to be one of the largest medical research institutes in the southern hemisphere.

A COMMUNITY HEALTH CENTRE OPENING NEAR YOU

As Queensland's population grows, we understand the need for more expansive healthcare with direct access in the places where people live. With this in mind, Mater opened the doors of Mater Health Centre Hope Island in 2012, its second health centre in the community.

The new multidisciplinary medical hub offers Mater Pharmacy, Mater Pathology, physiotherapy, podiatry, dental and general practice services, as well as specialist suites. Specialist consultations are offered to the Hope Island community (following referral by a GP) with surgical services available at Mater Private Hospitals in South Brisbane and Redland, providing a convenient alternative to travelling to the Gold Coast.

Next year, Mater will commence its presence in the Greater Springfield area with the opening of a Mater Health Centre in Brookwater Village, with services to eventually extend into Health City.

In the future, the Health City development in Springfield will house a \$21.4 million state-of-the-art cancer care clinic, run in partnership with Mater, Springfield Land Corporation and Radiation Oncology Queensland.

This year the health centre at Redland was renamed Mater Health Centre Redland, to join the family of health centres operated by Mater.

The local community enjoyed the fun and festivities at the Mater Health Centre Hope Island open day.



A MIRACLE HOME

Long-time supporters Betty and Tony from Roma were the lucky winners of a Mater Prize Home this year, taking home the keys to the Mount Coolum home valued at more than \$1 million. Betty has been purchasing tickets since her son was born, 50 years ago, and now she, Tony and dog Herbie are all enjoying their new seaside home.

For your chance to win and support Mater, visit www.materprizehome.com.au

EYE SPY

WITH MY LITTLE EYE

MATER NURSES ARE NOW MOBILISING—TRAVELLING TO LOGAN AND IPSWICH HOSPITALS OFFERING A HEALTH SERVICE TO SCREEN PREMATURE BABIES AT RISK OF RETINOPATHY OF PREMATURITY.

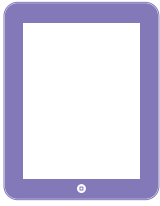
The eye condition develops in babies born prematurely when the blood vessels in the retina do not develop correctly and progression can lead to blindness. Routine eye examinations are carried out on babies who have a low birth weight (less than 1250 g) or are born prematurely (less than 31 weeks gestation).

In the past, premature babies at Logan and Ipswich hospitals were transferred to Mater for weekly eye examinations. Each baby transported required a nurse escort and was at risk of their clinical condition deteriorating during transport. Under this new scheme three Mater nurses work with Logan and Ipswich hospitals to conduct retinal photography on babies in the special care nurseries.



The retinal photography images, taken at the cotside using a portable RetCam, are then reviewed by a Consultant Paediatric Ophthalmologist at Mater Children's Hospital.

The retinopathy of prematurity testing initiative, an Australian first, was developed by Mater's neonatal and ophthalmology team in 2009.



HEALTH RECORDS A CLICK AWAY

Expectant mums at Mater are the first in Australia to access a new electronic health record to document their care during pregnancy, following the introduction of the Mater Shared Electronic Health Record.

Now expectant women, general practitioners and private obstetricians have the option to access and exchange obstetric information in a secure environment at the click of a button.

The records incorporate healthcare information sourced from Mater as well as the patient's GP and obstetrician, thereby reducing the time patients spend sharing their health information with each provider.

As well as obtaining current healthcare information, patients can access a variety of support tools to use during their pregnancy such as tailored public health advice relevant to their health journey, Mater brochures and approved external links.

iPADS FOR PATIENT CARE

Mater purchased 20 iPads in 2012 to help deliver clinical assessments and treatments through a variety of apps relating to speech pathology, occupational therapy, audiology, physiotherapy and nutrition and dietetics.



RIGHT PAY, FIRST TIME

One of the biggest administrative projects for Mater this year was the successful roll-out of the organisation's new payroll system, MyHR.

The system went live in July 2012 following a rigorous 18-month preparation across multiple departments to ensure a seamless transition. MyHR has new features, including a self-service portal which allows staff to access pay advice and change their personal details.

Servicing more than 7500 staff, delivering the new system took a combined effort of staff in finance, HR, payroll and information and infrastructure;

with input and consultation from clinicians and other key stakeholders.

Receiving the full backing of Mater's executive team, a highly-focused steering committee and a program of thorough testing prior to launch, the new payroll system proved to be a highly-dependable and accurate system which can support our growing team.

Since launching, MyHR has lived up to its promise of 'right pay, first time' and staff have noticed how quickly Mater is now able to process back-pays and other payment and industrial updates.

MATER RESEARCHER GIVEN FUNDING TO MAKE CHEMOTHERAPY SAFER

About one third of cancer patients suffer from an infection during, or soon after, their chemotherapy. Mater researcher Dr Ingrid Winkler was awarded \$360 000 from the Queensland Government to undertake further research into making chemotherapy safer.

The grant will enable Dr Winkler to investigate the complications of chemotherapy which mainly derive from damage to the stem cells in the bone marrow that regenerate blood and immune systems, leaving patients susceptible to infections.

Dr Winkler's research aims to reduce the side-effects of chemotherapy and help return cancer patients to health faster.

The research is particularly pertinent for patients undergoing repeated rounds of high-dose chemotherapy, or therapies that include cytotoxic drugs from the anthracycline group, as these patients are most at risk of treatment-induced immune suppression leading to infections and treatment-associated death. These include breast, ovarian, small cell lung cancer, lymphomas and sarcoma patients.

In 2011 Dr Winkler was awarded a National Health and Medical Research Council Career Development Award, one of only eight awarded in Australia.



GIVING TO SECURE RESEARCH FUNDING

Peter Evans, RBS Morgans executive and respected business person has a dream—that one day, research will discover better treatment or prevention of life-altering diseases.

Sitting on the Commercialisation Committee of Mater Research, Peter saw first-hand the challenges that researchers face every day—the uncertainty in long-term funding that could decide if years of research would come to fruition, or if the research was shelved.

Not liking the idea of research—or dreams—being shelved, Peter decided to leave a bequest to Mater, ensuring that its research programs continue to provide better health outcomes for Queenslanders, even though he may not be alive to see it.

“It makes me feel very good to know some of my assets will be going to Mater Research. I have been lucky in life and it is important that some of my accumulated assets go towards worthy causes in society,” Peter said.

To discuss a bequest donation, contact the Donor Liaison Manager at Mater Foundation on 07 3163 8000.

EXTRA SUPPORT FOR PROSTATE CANCER PATIENTS

Prostate cancer patients at South Brisbane’s Mater Adult Hospital can now receive extra support while undergoing treatment from a dedicated Prostate Cancer Specialist Nurse.

Mater is now one of two Queensland hospitals—and 13 nationally—to receive funding to provide a specialist prostate cancer nurse as part of a three year pilot program funded through the Movember Foundation and delivered by the Prostate Cancer Foundation Australia.

Each year in Australia, more than 3000 men die of prostate cancer—equal to the number of women who die from breast cancer annually—and a further 20 000 new cases are diagnosed.

The introduction of a Prostate Cancer Specialist Nurse at Mater will enable men diagnosed with prostate cancer to access specialist nursing care through the entire cycle of treatment—from diagnosis through to post treatment support.

BURNS ARE BACK

We’ve all heard of Movember ... Well before you ‘go the mo’, Mater asked men to ‘grow the burns’. Octoburn, an initiative of Couee Community, saw men growing and grooming their sideburns while raising funds for specific research into prostate cancer bone metastasis (which occurs when prostate cancer spreads to the bone). Mater Research is working to improve outcomes for patients with this form of incurable and debilitating cancer.

COLLABORATING FOR OVARIAN CANCER

Each year 1300 Australian women are diagnosed with ovarian cancer. Two-thirds of these women will die from the disease. These statistics have not changed in 15 years. To help combat this disease, Mater initiated a cross-campus collaborative which includes researchers and clinical staff to help identify better diagnostics, therapeutics and eventually vaccines.

To find out more visit research.mater.org.au





SUPPORTING **MATER**

The Mater Foundation runs a number of campaigns to help raise funds for prostate cancer. To read more see page 42





UROLOGISTS GIVEN THE GREENLIGHT

Mater was the first private hospital in Brisbane to offer patients a minimally-invasive laser therapy treatment for an enlarged prostate via new GreenLight Laser Therapy. In 2012, Mater introduced the service to Mater Private Hospital Redland.

The treatment uses 180 watt laser energy from the green light band to vaporise enlarged prostate tissue that obstructs the outlet of the bladder without harming other healthy tissue.

Benign prostatic hyperplasia is a non-cancerous enlargement of the prostate gland, affecting more than 50 per cent of men over the age of 60. As the prostate grows, it presses against and narrows the urethra, causing a urinary obstruction that makes it difficult to urinate. In the past, most patients with the condition were treated with medication or surgery which required an average three day hospital stay and four to six week recovery.

The new laser treatment enables patients to receive immediate and dramatic symptom relief, without the side effects or expense of medication. Patients can now go home the same day or after a night in hospital and return to normal duties within one or two weeks.

The GreenLight Laser was purchased thanks to a grant from Mater Foundation.

MANAGING DIABETES

BEING A TEENAGER IS CHALLENGING ENOUGH WITHOUT ADDING DIABETES TO THE MIX.

This year Mater launched a comprehensive assessment tool for teenagers with type 1 diabetes to help track how our young patients were coping with managing both diabetes and life in general. The tool, called the MY-Q, not only provided adolescents with an outlet to document their feelings about diabetes, but also provided valuable insight for clinicians to help identify problematic psychosocial issues.

MY-Q was offered to 43 patients who visit the Queensland Diabetes Centre, including some regional patients in 2012. Following our trial, five Diabetes Centres in Queensland have adopted the process, and sites in New South Wales and Victoria have also expressed interest.

Mater hopes to further adapt the platform for computer tablets and iPads, and automatically create a summary or score function which clinicians could use during the consultation.

THERE ARE AROUND
2 NEW CASES
OF DIABETES EVERY
24 HOURS



WHAT LIES BENEATH

When the Queensland Museum's *Mummy: Secrets of the Tomb* closed to the public in late October, more than 200 000 people had come to see the 3000 year old mummies on display.

However the exhibition of these historical pieces was not yet over with staff from Queensland X-Ray at Mater Private Hospital Brisbane given a special viewing of what lay within the historical sarcophagi.

The team—led by senior radiographer Bede Yates—were tasked with using computerised tomography (CT) to scan four of the British Museum's prized possessions.

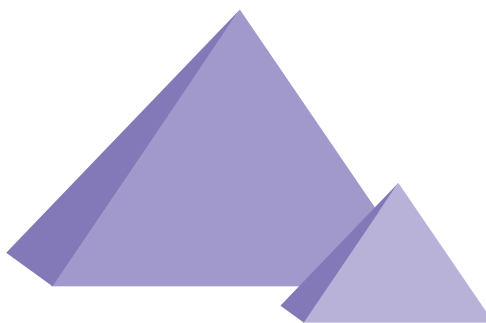
The British Museum was curious to check the condition of the mummies after travel and would use the scans to complete high resolution datasets to create interactive displays on life-sized computer screens when the mummies were returned to the museum.

For many years, the only way to extract data from Egyptian mummies was to unwrap them—a destructive and irreversible process. However, modern non-invasive imaging techniques such as X-rays and CT scanning have made it possible to look inside the mummy casings without disturbing the wrappings.

The Mater team scanned the mummies to see what was happening inside the sarcophagi and whether the individuals had moved within their casing. They also checked if any of the amulets placed on the mummies during the mummification process had moved.

The team found that one of the mummies, a little girl, was much smaller than previously thought, which has led to further research by the British Museum.

200 000+
PEOPLE CAME TO SEE
THE 3000 YEAR OLD
MUMMIES



'LITTLE MIRACLES' HAPPEN EVERY DAY

Every year, around 2000 babies are born prematurely at Mater. Some of these babies weigh as little as 400 g and require around the clock care at Mater's Neonatal Critical Care Unit; one of the largest facilities of its kind in the southern hemisphere.

Thanks to our supportive and giving community, Mater managed to raise more than \$1 million in 2012 to help sick babies and children at Mater.

Our flagship program, Mater Little Miracles includes a range of special fundraising campaigns held throughout the year across the State.

In 2012 we launched Mater Little Miracles Big Wishes, a new Mater Little Miracles program run in conjunction with Big W. This allowed the community to purchase wish tokens in store and leave messages for sick children and premature babies spending time in hospital.

The face of Mater Little Miracles Big Wishes, Daniel, inspired Big W shoppers and staff alike to give.

Daniel was born in December 2011 with multiple heart problems. Born prematurely, he had already endured multiple operations by the time he was two weeks old. Daniel still requires care and procedures at Mater, but despite all the challenges he has faced, he is making great progress.

DANIEL HAD LIFE-SAVING
SURGERY WHEN HE WAS BARELY
TWO WEEKS OLD





UNIFICATION

MATER IS AN INSTITUTION WITH SEVEN HOSPITALS, A MEDICAL RESEARCH INSTITUTE, PATHOLOGY AND PHARMACY SERVICES AND NEW HEALTH CENTRES IN SOUTH EAST QUEENSLAND.

WE ARE CONSTANTLY UNIFYING AS AN ORGANISATION, RECOGNISING OUR SKILLS AND TALENTS AND DRAWING ON EACH OTHER TO PROVIDE AN EXCEPTIONAL HEALTHCARE SERVICE TO THE COMMUNITY.

BECAUSE TOGETHER

WE CAN ACHIEVE MORE



MATER

REACHES OUT TO THE COMMUNITY

MORE THAN JUST A HEALTHCARE ORGANISATION, MATER RECOGNISES THE IMPORTANCE OF LOOKING OUTSIDE ITS CAMPUS TO OFFER HEALTH SUPPORT TO THE COMMUNITY. MATER IS CALLED BY OUR MISSION AND CATHOLIC IDENTITY TO CARE FOR, HEAR AND HELP THOSE WHO ARE MOST VULNERABLE, NEGLECTED AND STIGMATISED.

As part of our commitment to providing compassionate care to the sick and needy, Mater runs a number of initiatives in response to community need that may not otherwise be funded, providing outreach support to our most vulnerable people.

We have a rich history of helping the needy, stemming from our Mission and Values spearheaded by the Sisters of Mercy. Over our hundred year history, we've provided care and support to war veterans, HIV/AIDS patients and people experiencing mental illness.

Over the past century we constantly evolved to meet community need, and now focus on a number of programs to benefit the homeless, refugees, our Indigenous community and other disadvantaged people.

THIS YEAR MATER STAFF SPENT
4800 AFTER HOURS
CARE
TO HELP HOMELESS PEOPLE





- In May Mater joined with Micah Projects, UQ Healthcare and the Australian Common Ground Alliance to host a National Roundtable discussion on healthcare and homelessness with Boston's 'Healthcare for the Homeless Program'. The roundtable focused on models of integrated healthcare for people who are homeless and/or low income tenants who are vulnerable due to their mental illness and other significant chronic and complex physical and social health problems.
- Mater staff donated blankets and other essentials for those sleeping rough and tenants of the new 146 unit Brisbane Common Ground home—an affordable sustainable housing development for those who have experienced chronic homelessness and low-income earners. As part of our 'Homeless to Home Healthcare' strategy, Mater is collaborating with Micah Projects, St Vincent's Brisbane and with additional donor support from the John T Reid Charitable Trusts through Mater Foundation, to provide nursing care services and coordination within Brisbane.
- A further Homeless to Home Healthcare collaboration with Micah Projects, Greater Metro South Brisbane Medicare Local and Metro North Brisbane Medicare Local brought about a dedicated after-hours nursing program to care for people sleeping rough in a bid to help homeless people with complex needs access timely and quality healthcare. Adopting a consumer-focused and interdisciplinary approach, Mater nurses work alongside the Micah 'Street to Home' team seven nights a week supporting vulnerable people into more coordinated and integrated health. Those that are assisted range in age from ten to 85 years old and some 50 per cent of those we help are Aboriginal and/or Torres Strait Islander Australians.
- Mater launched a 'Refugee Women as Health Leaders' program to assist the hundreds of refugee women and families living in Brisbane. The program trained four refugee women in 2012 within the South Brisbane district as skilled health leaders—natural helpers within their own communities. It is not intended for the women to duplicate the role of health professionals but rather to offer additional community-based advice and health literacy support, providing an imperative link between refugees and much-needed health services.

GIVING A HELPING HAND

HELPING OUR NEIGHBOURS

Mater surgeons this year gave four-year-old George Mukisa back an element of his childhood after a Ugandan witch doctor mutilated his genitals in 2009.


George travelled to Australia to undergo reconstructive surgery after a neighbour lured him to a nearby banana plantation and removed his genitals with a knife in Uganda.

George's father had gone to church and his mother was attending a funeral service in the neighbourhood while George stayed with his two older brothers at home. George was playing in the neighbourhood with friends when his attackers whisked him away. He was later found in a pool of blood, unconscious with a traumatic genital mutilation.

Taken to a Ugandan hospital he had an operation to reconstruct his penis, but the plastic surgery later failed when they couldn't connect his urethra to the reconstructed penis. For two years George lived with a catheter, which prevented him from going to school and playing with friends.

He was flown to Australia and was admitted to Mater Children's Hospital where Mater doctors re-routed his urethra and redesigned some of the reconstructive work for a more natural look.

Since the reconstruction at Mater, George has returned to Uganda and was a witness in court where he told his story. He has gained a lot of confidence and has now returned to school.



RECONSTRUCTIVE SURGERY FOR A BRAVE LITTLE BOY

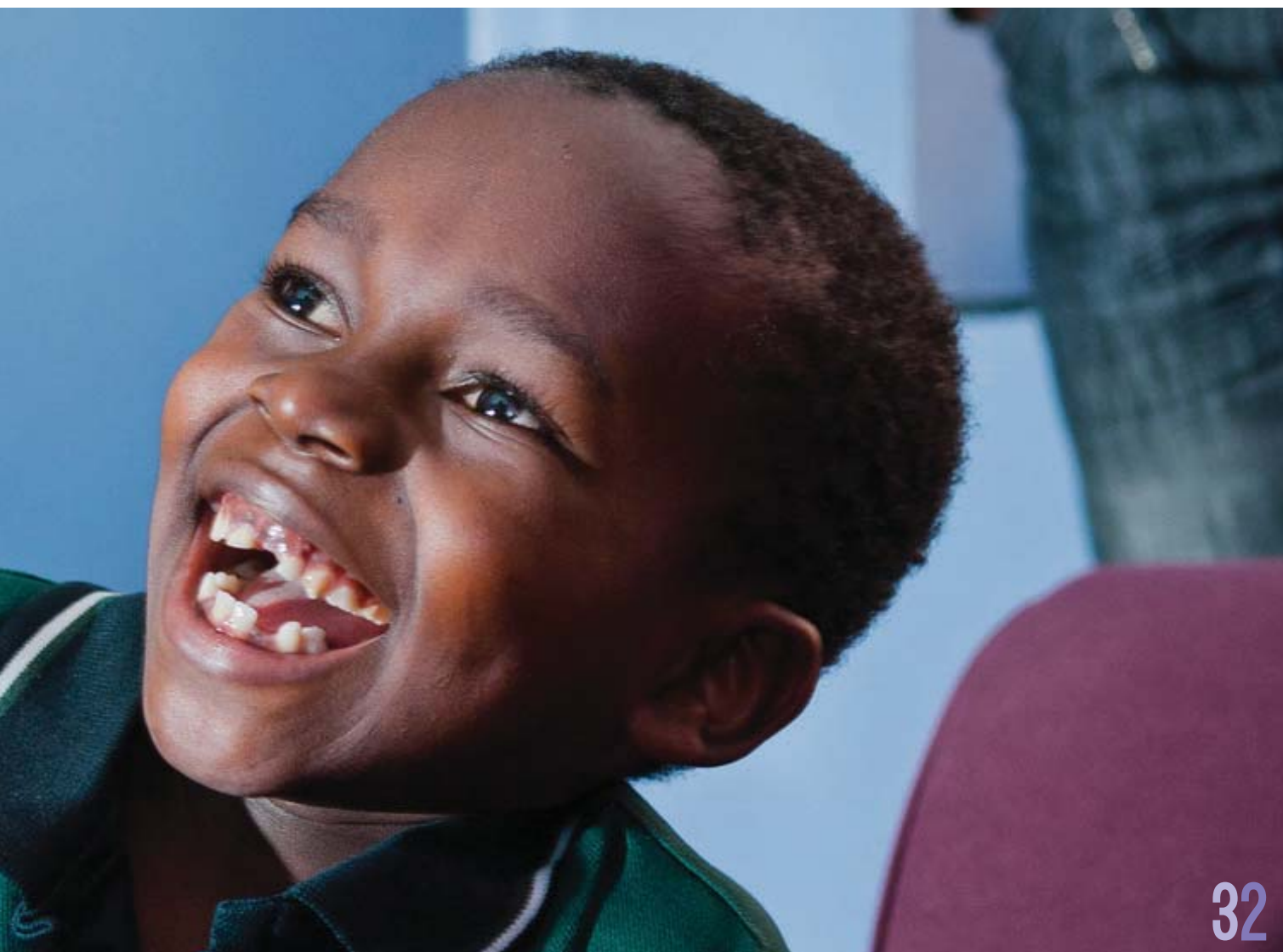
Families in the villages surrounding Uganda's capital live in fear their children will be abducted by witch doctors for child sacrifice which some believe brings wealth and good health.

RECORD NUMBER OF THEATRE CASES

Mater Private Hospital Brisbane broke a century record this year when it treated the highest number of patients in theatre in its 106 year history. February 2012 saw 1069 theatre cases handled expertly by Mater surgeons—the second time in two years that more than 1000 cases had been managed in a single month.

Mater Private Hospital Redland also saw 430 surgical cases this year—the highest on record since the hospital's opening in 2000.

MATER 1069 SURGERIES PERFORMED IN FEBRUARY 2012
THE HIGHEST IN 106 YEARS



JET SETTING FOR HEALTH



HANDS ON EDUCATION FOR MATER NURSES AND MIDWIVES

In the past, nursing education was conducted on the wards of hospitals. In the 1970s, this was transferred to universities and other tertiary institutions. Now, the medical and education sectors are working together to offer hands-on education for nurses and midwives in hospital settings.

This year Mater opened a state-of-the-art midwifery simulation centre, which incorporates low, medium and high fidelity clinical simulation into the curriculum of undergraduate midwifery students and healthcare professionals.

The Mater Education Practice Improvement Centre (MEPIC) based in Brisbane includes computer-controlled mannequins that act as patients, two immersive simulation suites fitted with audio and video equipment to allow filming of different scenarios and multidisciplinary and multipurpose clinical learning areas.

In addition to the simulation unit, construction of a new clinical school is underway at Mater's Redland campus enabling aspiring nurses the opportunity to study close to home and undertake clinical placements at Mater Private Hospital Redland, Redland Public Hospital and other healthcare facilities in the community.

Once completed, the clinical school will include a six-bed simulated patient care ward, lecture and tutorial space which will facilitate a Bachelor of Nursing program.



FOR THE FIRST TIME MATER'S RETRIEVAL AND LIFE SUPPORT TEAMS WORKED TOGETHER TO TRANSPORT A YOUNG PATIENT BY AIR FOR A HEART TRANSPLANT.

The patient was first placed on an Extracorporeal Membrane Oxygenation machine (ECMO) at Mater, a high intensity life support machine used to treat patients with sick hearts and lungs in our intensive care unit. Within a few days it was evident the patient's heart would not recover and he would require a heart transplant.

With Melbourne as the national centre for paediatric heart transplants, this child had to be moved to Melbourne's Royal Children's Hospital while still receiving the support of ECMO. Normally Melbourne performs the air retrievals, however on this occasion Mater's team was asked to arrange the air travel. To ensure the patient's safety, a Paediatric Intensivist, Paediatric Retrieval Nurse, Cardiac Surgeon, Cardiac Perfusionist, and an Extracorporeal Life Support Specialist worked together and travelled in the aeromedical jet with the patient, ensuring his safe delivery.

Mater is now working with Retrieval Services Queensland and the Royal Flying Doctors Service to build a specific platform that is safe to transport all our ECMO equipment in aircrafts and ambulances.



MATER HAS INTRODUCED A NEW INTENSIVE AND SCIENTIFICALLY PROVEN VOICE PROGRAM SPECIFICALLY DESIGNED FOR PEOPLE WITH VOICE AND SPEECH DIFFICULTIES ARISING FROM PARKINSON'S DISEASE.

The Lee Silverman Voice Treatment LOUD® Program is delivered by certified speech pathologists at Mater and can be a highly effective program for people with Parkinson's disease, who have a soft voice and want to improve their ability to communicate with their family and friends.

The program treats the underlying physical pathology associated with the disordered voice and has a positive effect on 90 per cent of patients.



BABY FACTS

- **June 2012** was a bumper month for new arrivals, with 918 babies delivered—the highest ever in a month at Mater—with an average of 28 babies born each day.
- In **November 2012** Mater attempted the Guinness World Record for the largest gathering of expectant women at South Bank Piazza. The event attracted hundreds of excited mums and Mater set a new Australian record.
- On **28 December 2012** Mater had a last minute baby boom—with 49 babies delivered in one day.

SHARING BEAUTIFUL MOMENTS WITH MATER MOTHERS

AT MATER, WE ARE PRIVILEGED TO SHARE IN SOME OF LIFE'S MOST BEAUTIFUL MOMENTS.

Delivering more than 10 000 babies in 2012, Mater is proud to welcome one in seven Queenslanders each year.

To celebrate this, and some fifty years in providing world-class maternity care, Mater ran a comprehensive awareness campaign (across television, radio and online), which led Mater Mums to join a newly established Facebook page to share their beautiful moments.

The Mater Mothers Facebook page (www.facebook.com/maternalmothers) launched in April and by December had more than 8000 mums (and some dads, grandparents and friends) following and contributing online.

The page offers its community of mums a place to converse with others, to ask questions, find support from Mater and from each other.

Join the conversation, visit www.facebook.com/maternalmothers



INDUCING LABOUR TO PREVENT STILLBIRTH

Sadly, stillbirth can happen in any pregnancy, occurring in approximately one in every 1000 otherwise uncomplicated pregnancies after 37 weeks gestation. To try to reduce this, Mater runs a number of research projects into stillbirth, one of which was published nationally this year.

Mater's Dr Michael Beckmann found women aged 40 years and older have a higher risk of stillbirth than younger women, but has found that induction of labour at or before 40 weeks may help reduce the risk of stillbirth without significantly increasing the likelihood of birth by caesarean section. Additionally, the study revealed several other important risk factors associated with stillbirth, including smoking.



BREASTFEEDING SUPPORT WELCOMED BY NEW MOTHERS

A community based outpatient breastfeeding support clinic has proven exceptionally popular and has been welcomed by new mothers in Redland.

The clinic, held at Mater Private Hospital Redland, was an instant success from its opening in September 2011 and sees approximately eight mothers at its weekly clinic to provide advice and feedback on any breastfeeding issues experienced. The breastfeeding support clinic is staffed by Mater midwives and in this private setting can offer extra time to monitor and observe new mums, to help rectify problems and provide advice.

Mater Pharmacy Redland also hosts a weekly walk-in baby clinic where new mothers can take their baby to be weighed and to discuss concerns about feeding (breast or bottle) with a Mater midwife.

THE STUDY OF MORE THAN 77 000 BIRTHS FROM 1998-2000 DREW UPON MATER'S EXTENSIVE DATABASE OF ROUTINELY COLLECTED MATERNITY DATA, WHICH IS THE LARGEST IN AUSTRALIA. WHILE THERE HAS BEEN LARGE INTERNATIONAL STUDIES LOOKING AT RISK FACTORS FOR STILLBIRTH, VERY LITTLE HAD BEEN PUBLISHED BASED ON AUSTRALIAN DATA.

NEW-LOOK MATER PHARMACY

Mater Pharmacy has recently partnered with Chemmart® (a national pharmacy brand) in order to provide an enhanced offering at a competitive price and a value promise on customers' healthcare needs.

While Mater Pharmacy is still fully owned and independently operated by Mater, the partnership is recognised by Chemmart® branding and is supported by a rewards program.

Mater Pharmacies at South Brisbane also underwent an interior refurbishment program to provide Mater patients and visitors with a pharmacy solution tailored to their needs in a bright and welcoming environment.

For more information about Mater Pharmacy and locations visit pharmacy.mater.org.au

BLOOD WORK

Mater Pathology staff provide 24-hour analytical and consultative services at Mater.

In 2012 we welcomed several more northside collection centres to Mater Pathology and now offer pathology laboratory testing and collection services from within Holy Spirit Northside Private Hospital and in the community with collection centres at Deagon, Kallangur, Kedron and Keperra. Mater Pathology has 27 collection centres throughout Brisbane.

To find your closest centre visit pathology.mater.org.au

YOUR BLOOD CAN BE TESTED AT
27 MATER
PATHOLOGY
COLLECTION CENTRES





For Women

Managing the stages of your life

Your body, your life. Reproductive years

Menopause

Manage the

- 1. Hot flashes
- 2. Mood swings
- 3. Weight gain
- 4. Dry skin
- 5. Bone loss
- 6. Hair loss
- 7. Sleep problems
- 8. Heart disease
- 9. Diabetes
- 10. Osteoporosis

Are you at risk of osteoporosis?

Your Solution

For Women

Managing the stages of your life

Reproductive years

Menopause

Feel Good



GEORGE PIPPOS MEMORIAL FUND ESTABLISHED

George Pippos was a man of many passions. He was a successful businessman, talented sportsman and loyal friend. George spent twelve years on the Board of Mater Foundation and was dedicated to the Greek community, loved rugby and horse racing and was known throughout Queensland for his community work and philanthropy.

George's lifelong commitment to community service was honoured this year with the establishment of a new endowment for medical research—The George Pippos Memorial Fund.

The George Pippos Memorial Fund will exist in perpetuity—as an enduring tribute to George as well as a permanent source of funds for cutting edge medical research at Mater.

A percentage of annual earnings from the fund will go towards critical healthcare and medical research projects, allowing George's passion for bettering people's lives to continue on, following his passing in 2002 at age 61.

To support Mater, visit www.materfoundation.org.au or contact 1800 440 155

A group of approximately ten young children of African descent are gathered in front of a rough stone wall. They are all smiling and looking towards the camera. Some children are holding up their hands, and one child in the foreground is holding a small object. The children are wearing various colorful clothing, including sweaters, t-shirts, and dresses. The overall atmosphere is joyful and happy.

PRE-LOVED MEDICAL EQUIPMENT

Whilst in Africa, the Climb for Cancer team also visited the Mater Hospital in Nairobi which is supported by Mater through pre-loved medical equipment, furniture and toys.

Mater urologist Dr Stuart Philip visited the hospital before his Kilimanjaro trek. He said he was amazed by what they could achieve with such little funding and was pleased to see the donated beds, lights, radiology and anaesthetic equipment being put to good use.

NO MOUNTAIN HIGH ENOUGH

Prostate cancer is one of the most common cancers among Australian men, affecting one in seven men in their lifetime.

Mater has developed a strong track record in prostate cancer research, funded by a number of fundraising campaigns. In 2012, Mater supporters trekked mountains, jumped from planes, grew sideburns and climbed one of Brisbane's tallest buildings often inspired by family and friends who had suffered from prostate cancer.

In August 2012, 25 inspired travellers embarked on one of the toughest physical and emotional challenges they have faced, trekking 5895 metres to the top of Africa's highest mountain—Mt Kilimanjaro. The Climb for Cancer crew trained for months in the lead up and took six days to travel the great height, some suffering altitude sickness and gastroenteritis.

Using his corporate connections, donor Adam Beattie managed to raise \$40 000 after his father had been touched by prostate cancer. Adam describes the experience as "eye opening" and "humbling", saying the "feeling of accomplishment was truly special—it was a culmination of months of training and fundraising realised in those few minutes at the summit. The experience is something I will never forget."

Collectively, the event raised \$378 000 for prostate cancer research at Mater.



DID YOU KNOW?

NINE MEN DIE OF PROSTATE CANCER EVERY DAY. HELP US REDUCE THIS BY SUPPORTING MATER'S PROSTATE CANCER RESEARCH. FIND OUT MORE BY VISITING WWW.MATERFOUNDATION.ORG.AU

DIE EVERY
24
HOURS

A graphic consisting of nine stylized human figures arranged in a 3x3 grid, representing the statistic that nine men die of prostate cancer every day.

MATER STAFF PLEDGE GREEN AMBITIONS

In 2011 Mater launched its 'turn it off' campaign, encouraging staff to switch off lights and computers at the end of each day in a bid to reduce our carbon footprint.

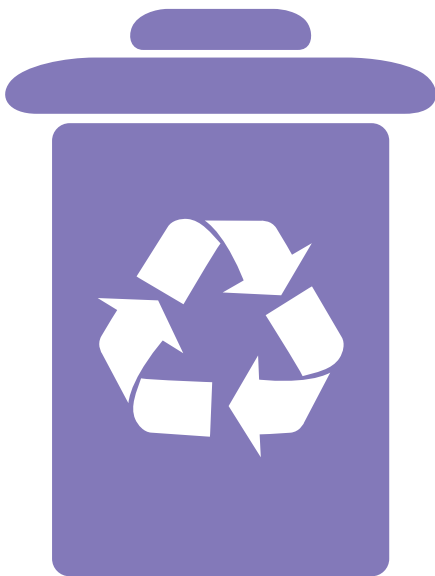
In 2012 Mater partnered with Griffith University and The University of Queensland to develop a joint research paper on the successful campaign, which was awarded best paper at the Australian and New Zealand Academy of Management Conference in Perth in November.

Mater continued its commitment to environmental awareness and action this year, engaging staff in a unique way, calling for individual pledges to be made to go green. More than 1000 pledges were made, which were displayed online for all staff to see.

Commitments to turn off computers, lights, use keep cups, the stairs and videoconferencing were just a few of the promises made by staff to help make our workplace greener.

Mater now has more than 100 environmental initiatives to increase our sustainability and efficiency in the workplace.

MATER'S ENVIRONMENTAL STATISTICS



RECYCLING
WASTE
↑ 30
TONNES



MATER ALSO GOT INVOLVED IN 'RIDE TO WORK DAY' AND 'NATIONAL RECYCLING WEEK' AND SOLD MORE THAN 2000 SUSTAINABILITY KEEP CUPS, ENABLING STAFF TO RE-USE COFFEE CUPS IN RETURN FOR A DISCOUNT.





MATER PEOPLE

MATER PEOPLE ARE SPECIAL. WE COME FROM NEAR AND FAR TO WORK AT MATER BECAUSE IT STANDS FOR SOMETHING. THANKS TO THE SISTERS OF MERCY, WE EMBODY MERCY, DIGNITY, CARE, COMMITMENT AND QUALITY IN EVERYTHING WE DO.

EACH DAY OUR 7500 MATER PEOPLE DON THEIR SCRUBS, LAB COATS, OVERALLS, APRONS OR UNIFORMS TO DELIVER EXCEPTIONAL CARE.



 **Mater**
Volunteers

 **Mater**
Volunteers

BECAUSE
TOGETHER
WE CAN ACHIEVE MORE



Mater volunteers Jean Shield and Liz Gordon.

TWENTY YEARS OF VOLUNTEERING

While helping almost 30 000 people in 2012, our wonderful volunteers also managed to find time to celebrate 20 years of service at Mater.

Mater Volunteer Services officially began in 1992, but volunteers have been providing assistance across our hospitals for decades—many years of listening and learning, of laughing and soothing.

From humble beginnings as 'Helping Hands' in 1992, Mater volunteers has grown into a team of more than 600 volunteers working in 50 different roles throughout more than 100 departments across the campus.

Just 15 people attended the first official orientation in March 1992, with the inaugural recognition ceremony held in October later that year.

The achievements and valued contributions made by Mater volunteers over the past 20 years were celebrated with a number of events during 2012 including anniversary displays, staff promotions and the very popular 'concert on the green' in September, which featured entertainment, a free BBQ, giveaways and a variety of information stands and market stalls.





LONG SERVICE

In 2012, we recognised a number of volunteers for their length of service—25 volunteers marked five years, eight marked 10 years, while Gwen Grant celebrated 15 years and Cheryl Henderson retired after 20 years as a Mater volunteer.

Thank you to all of our wonderful volunteers for their hard work and dedication.



MATER SHINES AT AWARDS

MERCY AWARDS

Mater's Mission and Values are part of everything we do and are instilled in all Mater people to ensure the vision of the Sisters of Mercy lives on.

Mater's Mercy Awards are held each September as part of Mater's celebration of Mercy Week and to reflect upon Mater's identity and the heritage of the Sisters of Mercy.

In 2012 Mater congratulated the following staff members and teams for their special commitment:

- **Clinical Services Award:** Maree Reynolds, Director of Women's Health Services.
- **Team Award:** MyHR Human Resource Information System.
- **Support Services Award:** Joy Cherry, Mater Children's Hospital Theatre Nurse and Volunteer Coordinator.



Maree Reynolds, Clinical Services Award winner



The team who developed MyHR, Team Award winner



Support Services Award winners



ALL HEART

Mater researcher Associate Professor Jon Whitehead was named the Heart Foundation Researcher of the Year for his research into ways to control fat cells.

A/Prof Whitehead's research aims to increase our understanding of how the body produces new fat cells and will potentially lead to the development of a new set of strategies to protect people from the effects of obesity and heart disease.

Recent research has shown that under conditions of positive energy balance—where more energy is absorbed from food than is expended through physical activity—the body may respond by increasing the size of existing fat cells, rather than generating new cells in which to store fat which leads to problems within the fat tissue that can contribute to the development of cardiovascular disease. On the other hand, people who retain the ability to generate new fat cells have smaller and healthier fat cells, and are better protected from some of the harmful effects of obesity.

As part of his project, A/Prof Whitehead will build on previous Heart Foundation-funded findings that have identified a novel biological mechanism that controls the production of fat cells.

SISTER ANGELA MARY WINS CATHOLIC HEALTH AWARD

Mater's Sr Angela Mary Doyle was this year recognised at the Catholic Health Australia Annual Awards for her contribution to the Catholic health and aged care community in Australia.

Sr Angela Mary received the Sr Maria Cunningham Lifetime Contribution Award and her many roles at Mater were highlighted.

Following study, Sr Angela Mary was appointed what would today be the CEO of Mater, which she served for 22 years and later ran the Mater Hospital Trust which made a major contribution to the growth of Mater. Additionally, Sr Angela Mary led efforts to provide care to men with HIV/AIDS in the 1980s, which was a controversial move at the time.

Sr Angela Mary is now retired and remains a great supporter of Mater; and she continues to write books and work for social justice.



Sr Nuala Doyle with CEO Dr John O'Donnell and award winner Sr Angela Mary Doyle

RESEARCH EXCELLENCE

Researchers, scientists and students were honoured at the annual Mater Research Awards for Research Excellence.

Dr Sumaira Hasnain, Professor Ian Zimmer, and Professor Timothy Florin were awarded the institute medals while Dr Shelley Wilkinson, Mr Indrajit Das and Ms Jacqueline Jauncey-Cooke received the 'early career researcher' and 'research higher degree student awards' (respectively) for their contributions to Mater Research.

Named after the Sisters of Mercy, the research awards went to:

- Dr Sumaira Hasnain: Sr Regis Mary Dunne Medal for outstanding research contribution
- Professor Ian Zimmer: Sr Madonna Josey Medal for outstanding contribution to the operation of the Institute
- Professor Timothy Florin: Sr Eileen Pollard Medal for incorporating research into clinical care provision
- Dr Shelley Wilkinson: Early Career Researcher Award
- Mr Indrajit Das: Scientific Research—Research Higher Degree Award
- Ms Jacqueline Jauncey-Cooke: Clinical Research—Research Higher Degree Award.



Mater Research award winners Dr Shelly Wilkinson, Prof Ian Zimmer, Prof Timothy Florin and Dr Sumaira Hasnain.

NOMINATION AT TELSTRA BUSINESS WOMEN'S AWARDS


Mater's Executive Director of People and Learning, Caroline Hudson was named a finalist in this year's Telstra Business Women's Awards.

The annual Telstra Business Women's Awards acknowledge the incredible achievements of business women across the country and receive around 4000 nominations each year.

Ms Hudson was a finalist in the White Pages Community and Government Award category for her part in developing a sustainable, productive, highly engaged and accountable workforce at Mater, as well as implementing and significantly improving payroll and rostering systems.

Ms Hudson was acknowledged for overseeing a 200 per cent increase in productivity in HR, a 31 per cent increase in the retention of graduate nurses and a 99 per cent reduction in needlestick injuries from non-hypodermic syringes.

**MATER ACHIEVED A
99% REDUCTION
IN NEEDLESTICK
INJURIES
FROM NON-HYPODERMIC SYRINGES**



CORONARY CARE AWARD

Clinical Nurse Consultant Wendy Senior received the 2012 Australasian Cardiovascular Nursing College Clinical Excellence Award from the Australian Cardiovascular Nursing College.

Ms Senior played a key role in developing the adult cardiology service at Mater Adult Hospital, in particular the design and planning of the current coronary care unit which opened in 2007. Additionally, Ms Senior worked collaboratively with her colleagues in improving emergency access for patients who require interventional cardiology and ensuring the professional development of each cardiology team member.



SHOWING OUR HOSPITALITY

Mater's Food Services Team Leader Donna Draper was awarded an 'Industry Excellence Award in Hospitality Services in HealthCare' from the Institute of Hospitality in HealthCare Ltd.

Donna, who is part of the Mater Private Hospital Redland team, was the deserving recipient of the award in recognition of outstanding service and commitment to hospitality services in patient care, client care or residential care for food services.



ALWAYS LEARNING WITH MATER

MATER RESEARCH'S ASSOCIATE PROFESSOR JOHN HOOPER HAS BEEN AWARDED A PRESTIGIOUS AUSTRALIAN RESEARCH COUNCIL FUTURE FELLOWSHIP WORTH \$820 000 OVER FOUR YEARS TO RESEARCH NEW APPROACHES TO TREAT AGGRESSIVE TUMOURS.

Collaborating with researchers in the United States and Spain, A/Prof Hooper aims to characterise a protein known to drive the spread of cancer.

While localised cancer can often be cured, curative treatment is generally not possible for cancer that has spread. The fellowship will allow A/Prof Hooper and his team to continue to find new ways to treat people with cancer, specifically focusing on prostate, colorectal and ovarian cancer.

Being a Mater researcher, collaboration with Mater clinicians has helped progress this important research. A/Prof Hooper said he was excited to integrate the lab expertise with clinical excellence to strengthen the relationship between bench and bedside.

In 2012, there were 209 fellowships, totalling \$151 million, to provide research opportunities to some of the world's best mid-career researchers.





A/Prof John Hooper in the Mater Research laboratory.

EDUCATION IS KEY

Mater's Annual Clinical Teaching and Learning Awards recognise staff who have added significant value to the provision of care through an outstanding commitment to learning and development. Dr Geof Hirst picked up the 2012 CEO Mission Award this year for his commitment to clinician mentoring across Mater's hospitals.

RECONNECTING ACROSS PRACTICE

Mater's 12th National Leadership and Learning Conference held in September showcased a mix of inspiring guest speakers presenting informative, enlightening and empowering messages. More than 230 multi-disciplinary delegates participated in talks focused on clinical practice, patient care, safety, team leadership and education.

STUDENT PLACEMENT FINDER

SPOT (Student Online Placement Tool) is a web-based solution for managing and coordinating student clinical placements. Created and designed by Mater in 2012, it combines intuitive dashboards for managers, students and clinical supervisors with powerful information gathering and capacity planning capabilities.

INTERNATIONAL STUDY SCHOLARSHIPS FOR MATER NURSES

Former nurse and Mater Nursing and Midwifery Alumni member, Betty Kennedy, is a shining example of living and working in the spirit of the Sisters of Mercy. With a commitment spanning six decades, Betty's contribution to Mater is testament to the professionalism and care that has been a part of Mater since its beginnings.

In recognition of Betty's 67-year association with Mater, the Mater Nursing and Midwifery Alumni this year launched the 'Betty Kennedy International Study Scholarship' for Mater nurses and midwives.

The scholarship will provide Mater nurses and midwives the opportunity to seek new challenges by attending international conferences and study programs and will be awarded to those who demonstrate the Mater Values—Mercy, Dignity, Quality, Commitment and Care.

Scholarship recipients will benefit greatly from attending an international study program, including exploring new information about their areas of speciality through speaker presentations, being on the cutting edge of new and often unreleased information concerning their area of practice, meeting and discussing ideas with the authors and presenters directly as well as being in a position to showcase Mater to the world.

To support the exceptional nurses at Mater, visit www.materfoundation.org.au

SHORT LIVES FOREVER REMEMBERED

For a number of years Mater has offered parents who experience a miscarriage the option of a cremation service.

In the past, the ashes were placed in a garden beside what was the Chapel of the Mater Mothers' Hospitals. When the new Mater Mothers' Hospitals were built the Chapel was decommissioned and the garden was closed as an active memorial garden. It remains a garden of remembrance for those ashes buried there.

The new commissioned memorial garden is located at the grounds of the Newhaven Memorial Park crematorium and Mater's pastoral care team held the first service of remembrance there in 2012.

Several families gathered at the garden to remember all the babies who lived their short lives within their mother's womb, to honour their brief lives and give thanks for the love they stirred within.



Mater warmly welcomed women and families to a special non-denominational service of remembrance, as part of International Pregnancy and Infant Loss Day, on Monday 15 October 2012. Similar services are conducted around the world, on this date, with candles being lit to honour and remember a pregnancy that was lost or a baby that has died—the result is a wave of light around the world.

This year 130 people attended this service including staff members or families who have lost a baby in the previous year and those families who have also attended in previous years.

Some Mater clinicians involved in neonatology, maternal fetal medicine, and counselling and bereavement support also contributed to the Perinatal Palliative Care website, which was set up by Catholic Health Australia in 2012 to support families who are faced with a life limiting diagnosis of their unborn baby.

For more information, visit www.pnpc.org.au

IN MEMORY

Carol Dawson **4 August 1949—1 October 2012**

Carol's long association with Mater began in August 1965 when she joined the staff as a clerk typist. Carol later progressed through the organisation in health record services. In 2012 Carol celebrated 45 years of service at Mater. When asked why she thought so many staff stayed at Mater for long periods of time, Carol's answer was simple: "We are that big happy family on the hill working for a common goal".

Carol was married for 40 years. She had an avid interest in water skiing and represented Queensland on the Australian Board of Water Skiing. She was also a member of the Antique Aeroplane Association of Australia.

Carol, her husband John and five others died in a vintage plane crash in the Sunshine Coast hinterland in 2012.

Owen McGuiness **16 October 1934—5 December 2011**

Owen McGuiness joined Mater in 1974 as Paymaster. At that time, one of the Sisters in the pay office banned him from using a calculator to work out the pays. As a result, his arithmetic skills stayed with him throughout his career at Mater as he would always do manual calculations with a paper and pencil before checking them on a calculator—not to see if he was correct, but to see if the calculator was correct.

Owen progressed to the manager of Personnel Services and was the Senior Manager of Human Resources and Payroll for many years. He was also involved with the Army Reserve and made the Queen's Honour List and was appointed a Member of the Order of the British Empire for services to the Army Reserve for rewriting the army's payroll system.

Fergus (Ferg) Wilson **26 December 1926—13 April 2012**

Orthopaedic legend Fergus (Ferg) Wilson's first professional appointment was as a first-year resident medical officer (RMO) at Mater Hospitals where his specialisation would quickly become orthopaedics. After completing Mater training, which saw him progress from being an RMO to a registrar, Fergus travelled to Scotland where he was admitted as a Fellow of the Royal College of Surgeons in 1959.

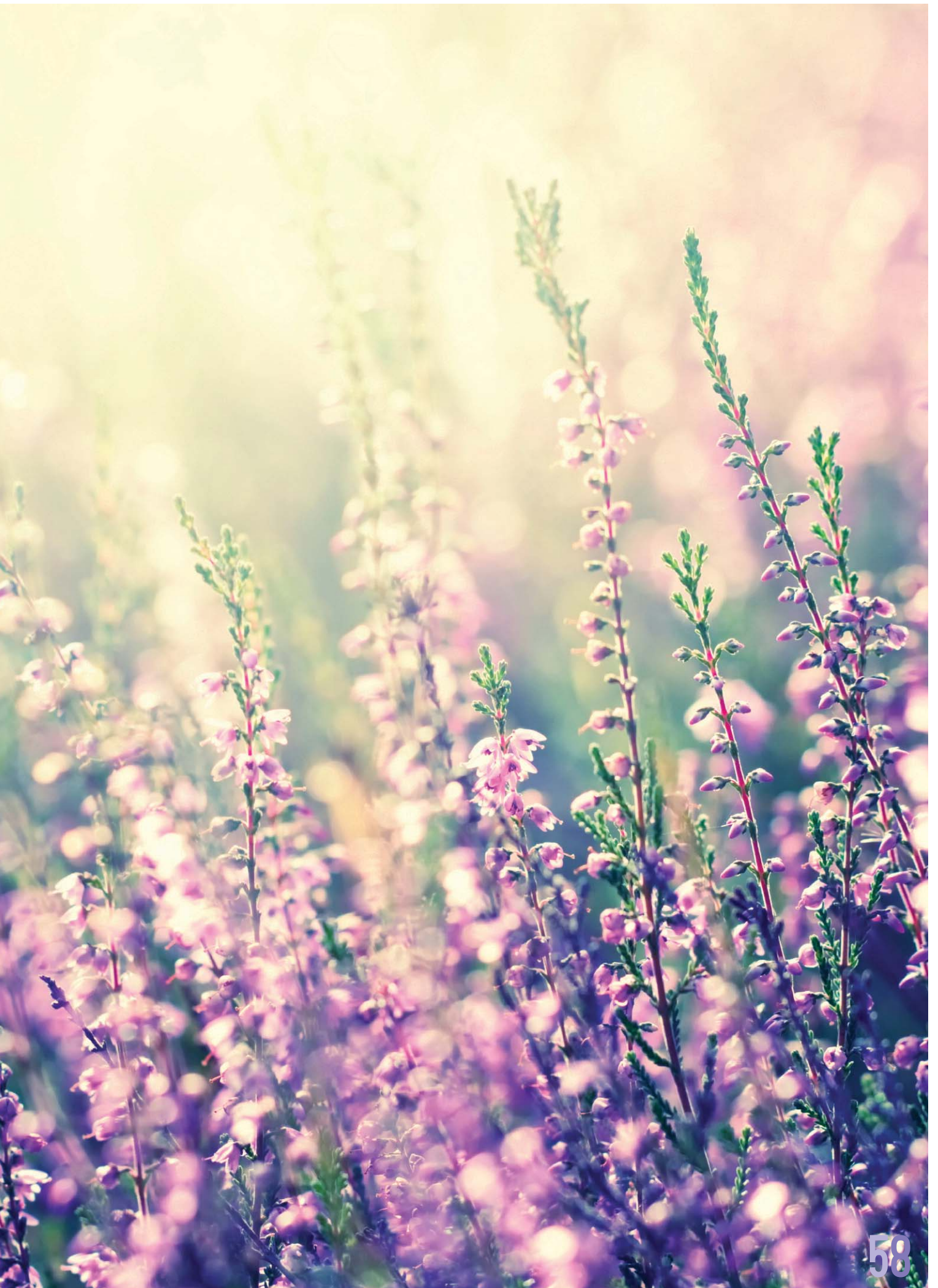
Outside of working life, Ferg enjoyed three sports in particular—rugby, golf and wrestling fish. In 1954 he began coaching the UQ rugby club and coached the team to three premierships in a row all the while working at Mater. Ferg once saved a fellow golfer's life at the Royal Queensland Golf Club when he went into cardiac arrest on the green. Ferg administered cardiac massage, a defibrillator shock and organised the ambulance which saved the man's life and after the incident continued to finish off the round.

Fergus Wilson retired at the age of 78 however he continued to work within the community as a board member on various committees.

Deborah Margaret 'Debbie' Sargent **7 December 1959—9 July 2012**

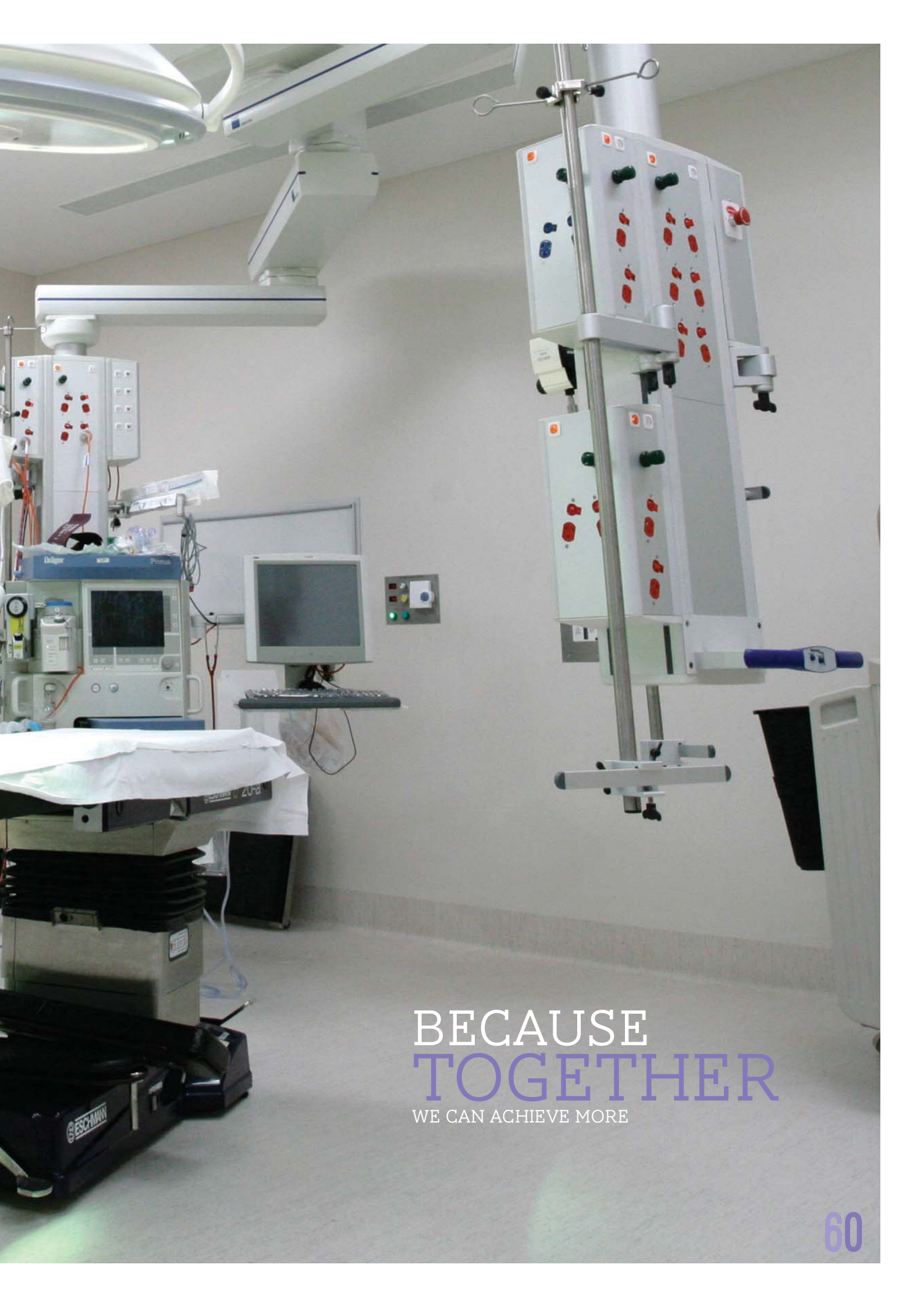
Debbie Sargent held numerous finance-related roles supporting many different divisions within Mater and later became a valued member of the Starlight Children's Foundation Queensland State Advisory Board.

When Debbie was diagnosed with cancer she made a tremendous effort to connect with other women at Mater also going through this painful journey. Debbie went out of her way to provide comfort, a listening ear, or a shoulder to cry on by taking them out for a coffee, even though she too was experiencing the lows that cancer can bring. Her positive outlook and friendly personality belied what she was experiencing. Whenever asked how she was doing Debbie would reply "fabulous" or "magnificent". She rarely complained about her predicament always claiming that someone else was worse off than she was, and that she was doing "just fine".





MATER REPORTS



BECAUSE
TOGETHER

WE CAN ACHIEVE MORE

AUXILIARY REPORTS

Mater Private Hospital Redland Auxiliary

In 2012, the Mater Redland Auxiliary focused its fundraising efforts on cancer, which continues to present one of the greatest threats to men's and women's health worldwide.

The auxiliary proposed a fundraising goal of \$100 000 for the procurement of essential equipment and instruments used in the care of patients undergoing treatment for breast cancer, melanomas and prostate cancer.

A fundraising activity was organised for each month in 2012. Bus trips took patrons on a number of outings around Queensland and northern New South Wales, raising \$2000.

A fashion parade and high tea at the Full Cream Café at the Pine Lodge in Thornlands raised more than \$4000.

More than \$5000 was raised through a Christmas in July event held at the Redland Sporting Club. The event was attended by Mirusia Louwerse from Andre Rieu's productions, who generously donated her services for free and delighted patrons with her magnificent soprano songs.

The fundraising trivia night held in late August proved to be a great success, with more trivia nights planned for 2013.

These events, combined with Mater Foundation's contribution and a generous donation from a local Redland gentleman, saw the Auxiliary reach its fundraising goal of \$100 000.

The Auxiliary is now well into its 2013 fundraising activities, which will raise money to care for cancer patients in Redland.

SISTER MARCIA MARANTA RSM
MATER PRIVATE HOSPITAL REDLAND AUXILIARY

AUXILIARY REPORTS CONTINUED

Mater Mothers' Hospitals Auxiliary

The Mater Mothers' Hospitals Auxiliary is made up of a dedicated group of ladies, some of whom have been members for more than 30 years.

2012 was another very successful year, with fundraising conducted through the Mater Mothers' Hospitals baby shop, raffles and cake, craft and Christmas stalls.

The Mater Mothers' Hospitals Auxiliary relies on the kind generosity of volunteers who donate their time and resources toward cooking, knitting, sewing and supervising the shop.

In 2012, the Auxiliary was delighted to contribute \$53 400 to Mater Mothers' Hospitals. These funds supported a range of items including development surveillance, Medela Symphony breast pumps, surgical procedures and six humidifiers for Mater's Neonatal Critical Care Unit.

Those who wish to assist the Auxiliary in its fundraising efforts can visit the baby shop on Tuesdays from 8.30 am to 1.30 pm and Thursdays from 10 am to 1.30 pm. New volunteers are welcome; the Auxiliary is always looking for new members to assist with such a worthwhile cause.

SHIRLEY KENNEDY
PRESIDENT, MATER MOTHERS' HOSPITAL AUXILIARY

Mater Adult Hospital Auxiliary

2012 was another busy but very successful year for the Mater Adult Hospital Auxiliary.

The annual St Patricks Day concert and morning tea was held in March at the Tattersall's Club. The concert was a huge success, thanks to the generosity of artists like soprano Maggie Noonan, Patrick Nolan, Kate Hartley and her Queensland Irish Association Irish Dancers.

The Auxiliary's second fundraising event was delicious morning tea which featured an appearance by guest speaker and ABC TV and weather presenter Jenny Woodward. Jenny spoke of her much-loved media career spanning over thirty years, with her attendance was much appreciated and enjoyed by all.

These fundraising efforts have enabled the Auxiliary to provide Mater's Day Oncology Unit with a new Accu Vein device, which allows medical staff to quickly and easily find patient's veins without undue hassle or trauma.

In addition, the Auxiliary was able to provide Mater's Occupational Therapy Department with a low level laser supporting high quality lymphoedema and vascular care for patients.

The Auxiliary thanks its friends and donors for their support throughout 2012.

TERRY PENDER
PRESIDENT, MATER ADULT HOSPITAL AUXILIARY



MATER RESEARCH PUBLICATIONS

2012 was another record year for Mater Research, with 287 publications in national and international literature. More than 40% of these publications were in ERA classification A* or A journals representing the upper echelons of health research journals, showing the international competitiveness of our research. Pleasingly, 60% of these publications were primarily driven at Mater and 40% involved Mater researchers collaborating externally. A significant highlight for the year was being published in *Nature Medicine* by Jean-Pierre Levesque and Ingrid Winkler's research groups.

- Achong N, Callaway L, d'Emden M, McIntyre HD, Lust K, Barrett HL. 2012. Insulin requirements in late pregnancy in women with type 1 diabetes mellitus: A retrospective review. *Diabetes Res Clin Pract* 98: 414-421.
- Adam C. 2012. Endogenous musculoskeletal tissue engineering--a focused perspective. *Cell Tissue Res* 347: 489-499.
- Adams MN, Pagel CN, Mackie EJ, Hooper JD. 2012. Evaluation of antibodies directed against human protease-activated receptor-2. *Naunyn Schmiedebergs Arch Pharmacol* 385: 861-873.
- Al Mamun A, O'Callaghan F, Scott J, Heussler H, O'Callaghan M, Najman J, Williams G. 2012. Continuity and discontinuity of trouble sleeping behaviors from early childhood to young adulthood in a large Australian community-based-birth cohort study. *Sleep Med* 13: 1301-1306.
- Allen J, Gamble J, Stapleton H, Kildea S. 2012. Does the way maternity care is provided affect maternal and neonatal outcomes for young women? A review of the research literature. *Women Birth* 25: 54-63.
- Andaki ACR, Tinoco ALA, Mendes EL, Junior RA, Hills AP, Amorim PRS. 2012. Different waist circumference measurements and prediction of cardiovascular risk factors and metabolic syndrome in children. *Obesity Research & Clinical Practice* 6: e149-e157.
- Ansari AR, Duley JA. 2012. Azathioprine co-therapy with allopurinol for inflammatory bowel disease: trials and tribulations. *Rev Assoc Med Bras* 58: S28-33.
- Armes JE, Davies CM, Wallace S, Taheri T, Perrin LC, Autelitano DJ. 2013. AGR2 expression in ovarian tumours: a potential biomarker for endometrioid and mucinous differentiation. *Pathology* 45: 49-54.
- Armes JE, McGown I, Williams M, Broomfield A, Gough K, Lehane F, Lourie R. 2012. The placenta in Beckwith-Wiedemann syndrome: genotype-phenotype associations, excessive extravillous trophoblast and placental mesenchymal dysplasia. *Pathology* 44: 519-527.
- Arnold A, Beckmann M, Flenady V, Gibbons K. 2012. Term stillbirth in older women. *Australian and New Zealand Journal of Obstetrics and Gynaecology* 52: 286-289.
- Aubron C, Syres G, Nichol A, Bailey M, Board J, Magrin G, Murray L, Presneill J, Sutton J, Vallance S, Morrison S, Bellomo R, Cooper DJ. 2012. A pilot feasibility trial of allocation of freshest available red blood cells versus standard care in critically ill patients. *Transfusion* 52: 1196-1202.
- Baker K, Brierley S, Mitchell G, Roe J. 2012. Effecting change using careplans: experience from two fractured neck of femur pathways. *Aust Health Rev* 36: 308-312.
- Barbier V, Winkler IG, Levesque JP. 2012. Mobilization of hematopoietic stem cells by depleting bone marrow macrophages. *Methods Mol Biol* 904: 117-138.
- Barbier V, Nowlan B, Levesque JP, Winkler IG. 2012. Flow cytometry analysis of cell cycling and proliferation in mouse hematopoietic stem and progenitor cells. *Methods in Molecular Biology* 844: 31-43.
- Barbier V, Winkler IG, Wadley R, Levesque JP. 2012. Flow cytometry measurement of bone marrow perfusion in the mouse and sorting of progenitors and stem cells according to position relative to blood flow in vivo. *Methods in Molecular Biology* 844: 45-63.
- Barrett HL, Gatford KL, Houda CM, De Blasio MJ, McIntyre HD, Callaway LK, Nitert MD, Coat S, Owens JA, Hague WM, Rowan JA. 2012. Maternal and Neonatal Circulating Markers of Metabolic and Cardiovascular Risk in the Metformin in Gestational Diabetes (MiG) Trial: Responses to maternal metformin versus insulin treatment. *Diabetes Care*: Epub.
- Bar-Zeev SJ, Barclay L, Farrington C, Kildea S. 2012. From hospital to home: The quality and safety of a postnatal discharge system used for remote dwelling Aboriginal mothers and infants in the top end of Australia. *Midwifery* 28: 366-373.
- Bar-Zeev SJ, Kruske SG, Barclay LM, Bar-Zeev NH, Carapetis JR, Kildea SV. 2012. Use of health services by remote dwelling Aboriginal infants in tropical northern Australia: a retrospective cohort study. *BMC Pediatr* 12: 19.
- Baskerville C, McIntyre HD, Oats J. 2012. Latest evidence in gestational diabetes. . Pages ISBN 978-981-904914-904913-904913. Latest evidence in obstetrics. . Mumbai, India.: TreeLife Media, Kathari Medical Subscription Services.
- Beahan N, Kei J, Driscoll C, Charles B, Khan A. 2012. High-frequency pure-tone audiometry in children: a test-retest reliability study relative to ototoxic criteria. *Ear Hear* 33: 104-111.

MATER RESEARCH PUBLICATIONS

- Beckmann M, Calderbank S. 2012. Mode of anaesthetic for category 1 caesarean sections and neonatal outcomes. *Aust N Z J Obstet Gynaecol* 52: 316-320.
- Bennett NC, Hooper JD, Lambie D, Lee CS, Yang T, Vesey DA, Samaratinga H, Johnson DW, Gobe GC. 2012. Evidence for steroidogenic potential in human prostate cell lines and tissues. *Am J Pathol* 181: 1078-1087.
- Betts KS, Williams GM, Najman JM, Bor W, Alati R. 2012. Pre-trauma verbal ability at five years of age and the risk of post-traumatic stress disorder in adult males and females. *J Psychiatr Res* 46: 933-939.
- Bickerstaff M, Beckmann M, Gibbons K, Flenady V. 2012. Recent cessation of smoking and its effect on pregnancy outcomes. *Australian and New Zealand Journal of Obstetrics and Gynaecology* 52: 54-58.
- Bierhaus A, Fleming T, Stoyanov S, Leffler A, Babes A, Neacsu C, Sauer SK, Eberhardt M, Schnolzer M, Lasischka F, Neuhuber WL, Kichko TI, Konrade I, Elvert R, Mier W, Pirags V, Lukic IK, Morcos M, Dehmer T, Rabbani N, Thornalley PJ, Edelstein D, Nau C, Forbes J, Humpert PM, Schwaninger M, Ziegler D, Stern DM, Cooper ME, Haberkorn U, Brownlee M, Reeh PW, Nawroth PP. 2012. Methylglyoxal modification of Na(v)1.8 facilitates nociceptive neuron firing and causes hyperalgesia in diabetic neuropathy. *Nat Med* 18: 926-933.
- Bilous M, Morey AL, Armes JE, Bell R, Button PH, Cummings MC, Fox SB, Francis GD, Waite B, McCue G, Raymond WA, Robbins PD, Farshid G. 2012. Assessing HER2 amplification in breast cancer: findings from the Australian In Situ Hybridization Program. *Breast Cancer Res Treat* 134: 617-624.
- Bogossian FE, Hepworth J, Leong GM, Flaws DF, Gibbons KS, Benefer CA, Turner CT. 2012. A cross-sectional analysis of patterns of obesity in a cohort of working nurses and midwives in Australia, New Zealand, and the United Kingdom. *Int J Nurs Stud* 49: 727-738.
- Boots AW, Gerloff K, Bartholome R, van Berlo D, Ledermann K, Haenen GR, Bast A, van Schooten FJ, Albrecht C, Schins RP. 2012. Neutrophils augment LPS-mediated pro-inflammatory signaling in human lung epithelial cells. *Biochim Biophys Acta* 1823: 1151-1162.
- Bowling FG, Heussler HS, McWhinney A, Dawson PA. 2013. Plasma and Urinary Sulfate Determination in a Cohort with Autism. *Biochem Genet* 51: 147-153.
- Bray LJ, Heazlewood CF, Atkinson K, Hutmacher DW, Harkin DG. 2012. Evaluation of methods for cultivating limbal mesenchymal stromal cells. *Cytotherapy* 14: 936-947.
- Breunis WB, Davila S, Shimizu C, Oharaseki T, Takahashi K, van Houdt M, Khor CC, Wright VJ, Levin M, Burns JC, Burgner D, Hibberd ML, Kuijpers TW. 2012. Disruption of vascular homeostasis in patients with Kawasaki disease: Involvement of vascular endothelial growth factor and angiopoietins. *Arthritis and Rheumatism* 64: 306-315.
- Broom A, Kirby E, Good P, Wootton J, Adams J. 2012. Specialists' Experiences and Perspectives on the Timing of Referral to Palliative Care: A Qualitative Study. *J Palliat Med* doi:10.1089/jpm.2012.0264.: Epub.
- Broom A, Kirby E, Good P, Wootton J, Adams J. 2013. The art of letting go: Referral to palliative care and its discontents. *Soc Sci Med* 78: 9-16.
- Burdon-Jones D, Gibbons K. 2012. The Skin Cancer Quality of Life Impact Tool (SCQOLIT): a validated health-related quality of life questionnaire for non-metastatic skin cancers. *J Eur Acad Dermatol Venereol*: Epub.
- Burr L, Fanning S, Wong D, Bowler S. 2012. An unusual radiological presentation of pulmonary Langerhans' cell histiocytosis. *BMJ Case Rep* doi: 10.1136/bcr-03-2012-5980: Epub.
- Byrne NM, Wood RE, Schutz Y, Hills AP. 2012. Does metabolic compensation explain the majority of less-than-expected weight loss in obese adults during a short-term severe diet and exercise intervention? *Int J Obes (Lond)*: epub, doi:10.1038/ijo.2012.1109.
- Callaway LK, Mamun A, McIntyre HD, Williams GM, Najman JM, Nitert MD, Lawlor DA. 2012. Does a history of hypertensive disorders of pregnancy help predict future essential hypertension? Findings from a prospective pregnancy cohort study. *J Hum Hypertens*: epub.
- Casar B, He Y, Iconomou M, Hooper JD, Quigley JP, Deryugina EI. 2012. Blocking of CDCP1 cleavage in vivo prevents Akt-dependent survival and inhibits metastatic colonization through PARP1-mediated apoptosis of cancer cells. *Oncogene* 31: 3924-3938.
- Catalano PM, McIntyre HD, Cruickshank JK, McCance DR, Dyer AR, Metzger BE, Lowe LP, Trimble ER, Coustan DR, Hadden DR, Persson B, Hod M, Oats JJ. 2012. The Hyperglycemia and Adverse Pregnancy Outcome Study: Associations of GDM and obesity with pregnancy outcomes. *Diabetes Care* 35: 780-786.
- Chapman MH, Webster GJ, Bannoo S, Johnson GJ, Wittmann J, Pereira SP. 2012. Cholangiocarcinoma and dominant strictures in patients with primary sclerosing cholangitis: a 25-year single-centre experience. *Eur J Gastroenterol Hepatol* 24: 1051-1058.
- Chennamsetty I, Claudel T, Kostner KM, Trauner M, Kostner GM. 2012. FGF19 signaling cascade suppresses APOA gene expression. *Arterioscler Thromb Vasc Biol* 32: 1220-1227.
- Chennamsetty I, Kostner KM, Claudel T, Vinod M, Frank S, Weiss TS, Trauner M, Kostner GM. 2012. Nicotinic acid inhibits hepatic APOA gene expression: studies in humans and in transgenic mice. *J Lipid Res* 53: 2405-2412.

MATER RESEARCH PUBLICATIONS

- Cheong JW, McCormack J. 2012. Fluconazole resistance in cryptococcal disease: emerging or intrinsic? *Med Mycol*: Epub.
- Chocair PR, Duley JA. 2012. Mycophenolate or azathioprine maintenance in lupus nephritis. *N Engl J Med* 366: 572; author reply 573.
- Chocair PR, Duley JA. 2012. Mycophenolate has replaced azathioprine in immunosuppression regimens. But is it better? *Rev Assoc Med Bras* 58: S24-27.
- Christensen ME, Wong WW, Waibel M, Johnstone RW, Waterhouse NJ. 2012. Cell death research, on an island girt by sea. *Cell Death Differ* 19: 1090-1091.
- Christensen ME, Sinfield LJ, Cullup H, Waterhouse NJ, Atkinson K, Rice AM. 2012. Environmental conditions are important for establishing and evaluating pre-clinical models of GVHD. *Bone Marrow Transplant* 47: 607-609.
- Cincotta R, Gray PH. 2012. Twin-to-twin Transfusion Syndrome. Pages 131-133 in Davies MWea, ed. *Antenatal Consults: A Guide for Neonatologists/Paediatricians*. Australia: Elsevier.
- Clark BK, Winkler E, Healy GN, Gardiner PG, Dunstan DW, Owen N, Reeves MM. 2012. Adults' Past-Day Recall of Sedentary Time: Reliability, Validity and Responsiveness. *Med Sci Sports Exerc*: epub, doi: 10.1249/MSS.1240b1013e3182837f3182857.
- Cobham VE. 2012. Do anxiety-disordered children need to come into the clinic for efficacious treatment? *J Consult Clin Psychol* 80: 465-476.
- Cobham VE, March S, De Young A, Leeson F, Nixon R, McDermott B, Kenardy J. 2012. Involving Parents in Indicated Early Intervention for Childhood PTSD Following Accidental Injury. *Clin Child Fam Psychol Rev* doi: 10.1007/s10567-012-0124-9: Epub.
- Cohn A, Norton R, Walsh M, Nourse C. 2012. Neurologic melioidosis in a child: unique clinical features and challenges of serologic diagnosis. *Pediatr Infect Dis J* 31: 1197-1198.
- Cohn A, Prebble J, Robson J, Nourse C. 2012. Q fever as a cause of recurrent soft-tissue nodules and abscesses in a child. *Pediatr Infect Dis J* 31: 525-527.
- Committee TIAoDPSGICPWGatHAPOHSS. 2012. The diagnosis of gestational diabetes mellitus: new paradigms or status quo? *J Matern Fetal Neonatal Med*: doi: 10.3109/14767058.14762012.14718002.
- Cook MM, Futrega K, Osiecki M, Kabiri M, Kul B, Rice A, Atkinson K, Brooke G, Doran M. 2012. Micromarrows-Three-Dimensional Coculture of Hematopoietic Stem Cells and Mesenchymal Stromal Cells. *Tissue Engineering Part C Methods* 18: 319-328.
- Courtney MD, Edwards HE, Chang AM, Parker AW, Finlayson K, Bradbury C, Nielsen Z. 2012. Improved functional ability and independence in activities of daily living for older adults at high risk of hospital readmission: a randomized controlled trial. *Journal of Evaluation in Clinical Practice* 18: 128-134.
- Coward JI, Kulbe H. 2012. The role of interleukin-6 in gynaecological malignancies. *Cytokine Growth Factor Rev* doi: 10.1016/j.cytogfr.2012.08.005: Epub.
- Croci I, Byrne NM, Choquette S, Hills AP, Chachay VS, Clouston AD, O'Moore-Sullivan TM, Macdonald GA, Prins JB, Hickman IJ. 2012. Whole-body substrate metabolism is associated with disease severity in patients with non-alcoholic fatty liver disease. *Gut*: epub.
- Crowe L, Chang A, Wallace K. 2012. Instruments for assessing readiness to commence suck feeds in preterm infants: effects on time to establish full oral feeding and duration of hospitalisation. *Cochrane Database Syst Rev* 4: CD005586.
- Currow D, Spruyt O, Hardy J. 2012. Defining refractory pain in cancer for clinicians and researchers. *Journal of Palliative Medicine* 15: 5-6.
- Danks M, Maideen MF, Burns YR, O'Callaghan MJ, Gray PH, Poulsen L, Watter P, Gibbons K. 2012. The long-term predictive validity of early motor development in "apparently normal" ELBW survivors. *Early Human Development* 88: 637-641.
- Dawson PA. 2012. The biological roles of steroid sulfonation. Pages. in Ostojic S, ed. *Steroids - From Physiology to Clinical Medicine*: Intech Pub.
- Dawson PA, Rakoczy J, Simmons DG. 2012. Placental, Renal, and Ileal Sulfate Transporter Gene Expression in Mouse Gestation. *Biol Reprod* 87: 43.
- de Courten B, de Courten MP, Dougherty S, Forbes JM, Potts JR, Considine RV. 2012. Insulin infusion reduces hepatocyte growth factor in lean humans. *Metabolism*: epub, doi: 10.1016/j.metabol.2012.10.1013. .
- De Young AC, Kenardy JA, Cobham VE, Kimble R. 2012. Prevalence, comorbidity and course of trauma reactions in young burn-injured children. *J Child Psychol Psychiatry* 53: 56-63.
- d'Emden H, Holden L, McDermott B, Harris M, Gibbons K, Gledhill A, Cotterill A. 2012. Concurrent validity of self-report measures of eating disorders in adolescents with type 1 diabetes. *Acta Paediatr* 101: 973-978.
- d'Emden H, Holden L, McDermott B, Harris M, Gibbons K, Gledhill A, Cotterill A. 2012. Disturbed eating behaviours and thoughts in Australian adolescents with type 1 diabetes. *J Paediatr Child Health*: epub, doi: 10.1111/jpc.12014.

MATER RESEARCH PUBLICATIONS

- Dimeski G, Morgan TJ, Presneill JJ, Venkatesh B. 2012. Disagreement between ion selective electrode direct and indirect methods: Estimation of the problem in a tertiary referral hospital. *Journal of Critical Care* 27: 326.e329-e316.
- Dong Y, He Y, de Boer L, Stack MS, Lumley JW, Clements JA, Hooper JD. 2012. The cell surface glycoprotein CUB domain containing protein 1 (CDCP1) contributes to Epidermal Growth Factor Receptor-mediated cell migration. *Journal of Biological Chemistry* 287: 9792-9803.
- Doran MR, Aird IA, Marturana F, Timmins N, Atkinson K, Nielsen LK. 2012. Bioreactor for Blood Product Production. *Cell Transplant* doi: 10.3727/096368911X627363: Epub.
- Duley JA, Chocair PR. 2012. III International Thiopurine Symposium in São Paulo, Brazil. *Rev Assoc Med Bras* 58: S3-4.
- Duley JA, Somogyi AA, Martin JH. 2012. The future of thiopurine pharmacogenomics. *Pharmacogenomics* 13: 1549-1552.
- Eri R, McGuckin MA, Wadley R. 2012. T cell transfer model of colitis: a great tool to assess the contribution of T cells in chronic intestinal inflammation. *Methods in Molecular Biology* 844: 261-275.
- Flenady VJ, Ellwood DA. 2012. Bringing stillbirth out of the shadows for all women having a baby in Australia. *Med J Aust* 197: 256-257.
- Flenady V, Carroll C, Richardson R. 2012. Support for parents following stillbirth. *Med J Aust* 197: 276.
- Foote M, Burmeister B, Dwyer P, Burmeister E, Lambie D, Allan C, Barbour A, Bayley G, Pullar A, Meakin J, Thomas J, Smithers M. 2012. An innovative approach for locally advanced stage III cutaneous melanoma: radiotherapy, followed by nodal dissection. *Melanoma Res* 22: 257-262.
- Forristal CE, Winkler IG, Nowlan B, Barbier V, Walkinshaw G, Levesque J-P. 2013. Pharmacologic stabilization of HIF-1 α increases hematopoietic stem cell quiescence in vivo and accelerates blood recovery after severe irradiation. *Blood* 121: 759-769.
- Foster J, Spence K, Henderson-Smart D, Harrison D, Gray PH, Bidewell J. 2013. Procedural pain in neonates in Australian hospitals: A survey update of practices. *J Paediatr Child Health* 49: E35-39.
- Fox SB, Kumarasinghe MP, Armes JE, Bilous M, Cummings MC, Farshid G, Fitzpatrick N, Francis GD, McCloud PI, Raymond W, Morey A. 2012. Gastric HER2 Testing Study (GaTHER): an evaluation of gastric/gastroesophageal junction cancer testing accuracy in Australia. *Am J Surg Pathol* 36: 577-582.
- Francis J, Anders M, Lobegeier P, Nourse C. 2012. Fatal Haemophilus influenzae type a sepsis in an infant. *J Paediatr Child Health*: epub, doi: 10.1111/jpc.12031.
- Funnell AP, Norton LJ, Mak KS, Burdach J, Artuz CM, Twine NA, Wilkins MR, Power CA, Hung TT, Perdomo J, Koh P, Bell-Anderson KS, Orkin SH, Fraser ST, Perkins AC, Pearson RC, Crossley M. 2012. The CACCC-Binding Protein KLF3/BKLF Represses a Subset of KLF1/EKLF Target Genes and Is Required for Proper Erythroid Maturation In Vivo. *Mol Cell Biol* 32: 3281-3292.
- Gardener GJ, Legler TJ, Hyett JA, Liew YW, Flower RL, Hyland CA. 2012. Anti-D in pregnant women with the RHD(IVS3+1G>A)-associated DEL phenotype. *Transfusion* 52: 2016-2019.
- Gerloff K, Fenoglio I, Carella E, Kolling J, Albrecht C, Boots AW, Forster I, Schins RP. 2012. Distinctive toxicity of TiO₂ rutile/anatase mixed phases nanoparticles on Caco-2 cells. *Chemical Research in Toxicology* 25: 646-655.
- Gerloff K, Pereira DI, Faria N, Boots AW, Kolling J, Forster I, Albrecht C, Powell JJ, Schins RP. 2012. Influence of simulated gastrointestinal conditions on particle-induced cytotoxicity and interleukin-8 regulation in differentiated and undifferentiated Caco-2 cells. *Nanotoxicology*: doi: 10.3109/17435390.17432012.17662249.
- Gondolf UH, Tetens I, Hills AP, Michaelsen KF, Trolle E. 2012. Validation of a pre-coded food record for infants and young children. *European Journal of Clinical Nutrition* 66: 91-96.
- Good P, Hardy J. 2012. Opioid analgesics for severe cancer pain. Pages 30-40 in King T, Porreca F, eds. *Analgesics for Cancer Pain*, vol. . London: Future Medicine Ltd.
- Gorrell RJ, Guan J, Xin Y, Tafreshi MA, Hutton ML, McGuckin MA, Ferrero RL, Kwok T. 2012. A novel NOD1- and CagA-independent pathway of interleukin-8 induction mediated by the Helicobacter pylori type IV secretion system. *Cell Microbiol* doi: 10.1111/cmi.12055: Epub.
- Griffin PM, Price GR, Schooneveldt JM, Schlebusch S, Tilse MH, Urbanski T, Hamilton B, Venter D. 2012. Use of matrix-assisted laser desorption ionization-time of flight mass spectrometry to identify vancomycin-resistant enterococci and investigate the epidemiology of an outbreak. *J Clin Microbiol* 50: 2918-2931.
- Groenen MA, Archibald AL, Uenishi H, Tuggle CK, Takeuchi Y, Rothschild MF, Rogel-Gaillard C, Park C, Milan D, Megens HJ, Li S, Larkin DM, Kim H, Frantz LA, Caccamo M, Ahn H, Aken BL, Anselmo A, Anthon C, Auvil L, Badaoui B, Beattie CW, Bendixen C, Berman D, Blecha F, Blomberg J, Bolund L, Bosse M, Botti S, Bujie Z, Bystrom M, Capitanu B, Carvalho-Silva D, Chardon P, Chen C, Cheng R, Choi SH, Chow W, Clark RC, Clee C, Crooijmans RP, Dawson HD, Dehais P, De Sapio F, Dibbits B, Drou N, Du ZQ, Eversole K, Fadista J, Fairley S, Faraut T, Faulkner GJ, Fowler KE, Fredholm M, Fritz E, Gilbert JG, Giuffra E, Gorodkin J, Griffin DK, Harrow JL, Hayward A, Howe K, Hu ZL, Humphray SJ, Hunt T, Hornshoj H, Jeon JT, Jern P, Jones M, Jurka J, Kanamori H, Kapetanovic R, Kim J, Kim JH, Kim KW, Kim TH, Larson G, Lee K, Lee KT, Leggett R, Lewin HA, Li Y, Liu W, Loveland JE, Lu Y, Lunney

MATER RESEARCH PUBLICATIONS

- JK, Ma J, Madsen O, Mann K, Matthews L, McLaren S, Morozumi T, Murtaugh MP, Narayan J, Nguyen DT, Ni P, Oh SJ, Onteru S, Panitz F, Park EW, Park HS, Pascal G, Paudel Y, Perez-Enciso M, Ramirez-Gonzalez R, Reecy JM, Rodriguez-Zas S, Rohrer GA, Rund L, Sang Y, Schachtschneider K, Schraiber JG, Schwartz J, Scobie L, Scott C, Searle S, Servin B, Southey BR, Sperber G, Stadler P, Sweedler JV, Tafer H, Thomsen B, Wali R, Wang J, White S, Xu X, Yerle M, Zhang G, Zhang J, Zhao S, Rogers J, Churcher C, Schook LB. 2012. Analyses of pig genomes provide insight into porcine demography and evolution. *Nature* 491: 393-398.
- Hardy J, Currow DC. 2012. Sector-wide approach to phase III studies. *Palliat Med* 26: 864.
- Hardy J, Norris R, Anderson H, O'Shea A, Charles B. 2012. Is saliva a valid substitute for plasma in pharmacokinetic studies of oxycodone and its metabolites in patients with cancer? *Support Care Cancer* 20: 767-772.
- Hardy MY, Vari F, Rossetti T, Hart DN, Prue RL. 2012. A flow cytometry based assay for the enumeration of regulatory T cells in whole blood. *J Immunol Methods*: Epub.
- Hardy LL, Hills AP, Timperio A, Cliff D, Lubans D, Morgan PJ, Taylor BJ, Brown H. 2012. A hitchhiker's guide to assessing sedentary behaviour among young people: Deciding what method to use. *J Sci Med Sport* doi:10.1016/j.jsams.2012.05.010: Epub.
- Hardy J, Quinn S, Fazekas B, Plummer J, Eckermann S, Agar M, Spruyt O, Rowett D, Currow DC. 2012. Randomized, double-blind, placebo-controlled study to assess the efficacy and toxicity of subcutaneous ketamine in the management of cancer pain. *J Clin Oncol* 30: 3611-3617.
- Harrop CA, Thornton DJ, McGuckin MA. 2012. Detecting, visualising and quantifying mucins. Pages 49-66. *Methods in Molecular Biology*, vol. 842.
- Hasnain SZ, McGuckin MA, Grecis RK, Thornton DJ. 2012. Serine Protease(s) Secreted by the Nematode *Trichuris muris* Degrade the Mucus Barrier. *PLoS Negl Trop Dis* 6: e1856.
- Hasnain SZ, Gallagher AL, Grecis RK, Thornton DJ. 2012. A new role for mucins in immunity: Insights from gastrointestinal nematode infection. *Int J Biochem Cell Biol* doi: 10.1016/j.biocel.2012.10.011: Epub.
- Hasnain SZ, Lourie R, Das I, Chen A, McGuckin M. 2012. The interplay between endoplasmic reticulum stress and inflammation. *Immunology and Cell Biology* 90: 260-270.
- Hasnain SZ, Tauro S, Das I, Tong H, Chen AC, Jeffery PL, McDonald V, Florin TH, McGuckin MA. 2012. IL-10 Promotes Production of Intestinal Mucus by Suppressing Protein Misfolding and Endoplasmic Reticulum Stress in Goblet Cells. *Gastroenterology*: epub, doi: 10.1053/j.gastro.2012.1010.1043.
- Hawi Z, Matthews N, Barry E, Kirley A, Wagner J, Wallace RH, Heussler HS, Vance A, Gill M, Bellgrove MA. 2012. A high density linkage disequilibrium mapping in 14 noradrenergic genes: evidence of association between SLC6A2, ADRA1B and ADHD. *Psychopharmacology (Berl)* DOI 10.1007/s00213-012-2875-x: Epub.
- Hayatbakhsh MR, O'Callaghan MJ, Bor W, Williams GM, Najman JM. 2012. Association of Breastfeeding and Adolescents' Psychopathology: A Large Prospective Study. *Breastfeed Med* doi:10.1089/bfm.2011.0136: Epub.
- Hayatbakhsh MR, Clavarino A, Williams GM, Bor W, Najman JM. 2012. Young adults' gambling and its association with mental health and substance use problems. *Aust N Z J Public Health* 36: 160-166.
- Hayatbakhsh MR, Flenady VJ, Gibbons KS, Kingsbury AM, Hurrion E, Mamun AA, Najman JM. 2012. Birth outcomes associated with cannabis use before and during pregnancy. *Pediatric Research* 71: 215-219.
- Heazell AE, McLaughlin MJ, Schmidt EB, Cox P, Flenady V, Khong TY, Downe S. 2012. A difficult conversation? The views and experiences of parents and professionals on the consent process for perinatal postmortem after stillbirth. *BJOG* 119: 987-997.
- Heazlewood C, Cook M, Ilic I, Atkinson K. 2012. Exploring the human term placenta as a novel niche for stem cells and their application in the clinic. Pages 53-76 in Zheng J, ed. *Research On The Human Placenta*, vol. 3. ~: In Tech.
- Heussler H, Chan P, Price AM, Waters K, Davey MJ, Hiscock H. 2012. Pharmacological and non-pharmacological management of sleep disturbance in children: An Australian Paediatric Research Network survey. *Sleep Med*: epub, doi: 10.1016/j.sleep.2012.1009.1023.
- Hickman IJ, Whitehead JP. 2012. Structure, signalling and physiologic role of adiponectin-dietary and exercise-related variations. *Curr Med Chem* 19: 5427-5443.
- Hides J, Stanton W. 2012. Muscle imbalance among elite Australian rules football players: a longitudinal study of changes in trunk muscle size. *J Athl Train* 47: 314-319.
- Hines S, Steels E, Chang A, Gibbons K. 2012. Aromatherapy for treatment of postoperative nausea and vomiting. *Cochrane Database Syst Rev* 4: CD007598.
- Ho SS, Dhaliwal SS, Hills AP, Pal S. 2012. The effect of 12 weeks of aerobic, resistance or combination exercise training on cardiovascular risk factors in the overweight and obese in a randomized trial. *BMC Public Health* 12: 704.
- Homer CS, Griffiths M, Brodie PM, Kildea S, Curtin AM, Ellwood DA. 2012. Developing a Core Competency Model and Educational Framework for Primary Maternity Services: A national consensus approach. *Women Birth* 25: 122-127.

- Hordern MD, Dunstan DW, Prins JB, Baker MK, Singh MA, Coombes JS. 2012. Exercise prescription for patients with type 2 diabetes and pre-diabetes: A position statement from Exercise and Sport Science Australia. *Journal of Science and Medicine in Sport* 15: 25-31.
- Horey D, Flenady V, Heazell AEP, Khong TY. 2012. Interventions for supporting parents' decisions about autopsy after stillbirth (Protocol). *Cochrane Database of Systematic Reviews*: CD009932. DOI: 009910.001002/14651858.CD14009932.
- Horey D, Flenady V, Conway L, McLeod E, Yee Khong T. 2012. Decision influences and aftermath: parents, stillbirth and autopsy. *Health Expect*: epub, doi: 10.1111/j.1369-7625.2012.00782.x.
- Hou D, Shetty U, Phillips M, Gray PH. 2012. Cerebellar haemorrhage in the extremely preterm infant. *Journal of Paediatrics and Child Health* 48: 350-355.
- Hough J, Bagley C, Koorts P. 2012. Talipes equinovarus (Clubfoot). Pages 281-284 in Davies MW, Inglis GDT, Jardine LA, Koorts PJ, eds. *Antenatal Consults: A Guide for Neonatologists/Paediatricians*. Australia: Elsevier.
- Hough JL, Shearman AD, Jardine LA, Davies MW. 2012. Humidified high flow nasal cannulae: Current practice in Australasian nurseries, a survey. *J Paediatr Child Health* 48: 106-113.
- Hough J, Johnston L, Brauer S, Woodgate P, Pham T, Schibler A. 2012. Effect of body position on ventilation distribution in preterm infants on CPAP. *Paediatric and Critical Care Medicine* 13: 446-451.
- Hughes IP, Harris M, Choong CS, Ambler G, Cutfield W, Hofman P, Cowell CT, Werther G, Cotterill A. 2012. Growth Hormone Regimens in Australia: Analysis of the First Three Years of Treatment for Idiopathic Growth Hormone Deficiency and Idiopathic Short Stature. *Clin Endocrinol (Oxf)* 77: 62-71.
- Huynh K, Kiriazis H, Du XJ, Love JE, Jandeleit-Dahm KA, Forbes JM, McMullen JR, Ritchie RH. 2012. Coenzyme Q(10) attenuates diastolic dysfunction, cardiomyocyte hypertrophy and cardiac fibrosis in the db/db mouse model of type 2 diabetes. *Diabetologia* 55: 1544-1553.
- Hyde R, O'Callaghan MJ, Bor W, Williams GM, Najman JM. 2012. Long-term outcomes of infant behavioral dysregulation. *Pediatrics* 130: e1243-1251.
- Irvine KM, Gallego P, An X, Best SE, Thomas G, Wells C, Harris M, Cotterill A, Thomas R. 2012. Peripheral blood monocyte gene expression profile clinically stratifies patients with recent-onset type 1 diabetes. *Diabetes* 61: 1281-1290.
- Iyer A, Lim J, Poudyal H, Reid RC, Suen JY, Webster J, Prins JB, Whitehead JP, Fairlie DP, Brown L. 2012. An inhibitor of phospholipase A2 group IIA modulates adipocyte signaling and protects against diet-induced metabolic syndrome in rats. *Diabetes* 61: 2320-2329.
- Izatt MT, Bateman GR, Adam CJA. 2012. Evaluation of the iPhone with an acrylic sleeve versus the Scoliometer for rib hump measurement in scoliosis. *Scoliosis* 7: 14.
- Izatt MT, Adam CJ, Verzin EJ, Labrom RD, Askin GN. 2012. CT and radiographic analysis of sagittal profile changes following thoracoscopic anterior scoliosis surgery. *Scoliosis* 7: 15.
- Jaffer I, Riederer M, Shah P, Peters P, Quehenberger F, Wood A, Scharnagl H, Marz W, Kostner KM, Kostner GM. 2012. Expression of fat mobilizing genes in human epicardial adipose tissue. *Atherosclerosis* 220: 122-127.
- Jauncey-Cooke J, Bogossian FE, Hough JL, Schibler A, Davies MW, Grant CA, Gibbons K, East CE. 2012. Lung recruitment manoeuvres for reducing respiratory morbidity in mechanically ventilated neonates. *Cochrane Database of Systematic Reviews*: CD009969.
- Jayawardena R, Byrne NM, Soares MJ, Katulanda P, Hills AP. 2012. Food consumption of Sri Lankan adults: an appraisal of serving characteristics. *Public Health Nutr* doi:10.1017/S1368980012003011: Epub.
- Jayawardena R, Ranasinghe P, Byrne NM, Soares MJ, Katulanda P, Hills AP. 2012. Prevalence and trends of the diabetes epidemic in South Asia: a systematic review and meta-analysis. *BMC Public Health* 12: 380.
- Jayawardena R, Swaminathan S, Byrne NM, Soares MJ, Katulanda P, Hills AP. 2012. Development of a food frequency questionnaire for Sri Lankan adults. *Nutr J* 11: 63.
- Josif C, Barclay L, Bar-Zeev S, Kildea S, Brittin M. 2012. How participatory action research supported improvements to the postnatal discharge summary system used for remote dwelling Aboriginal mothers and infants in the Top End of Australia. *Action Research* 10: 387-405.
- Justo RN. 2012. Management of familial hypercholesterolaemia in children and adolescents. *J Paediatr Child Health* 48: E53-58.
- Karlsson NG, McGuckin MA. 2012. O-Linked glycome and proteome of high-molecular-mass proteins in human ovarian cancer ascites: Identification of sulfation, disialic acid and O-linked fucose. *Glycobiology* 22: 918-929.
- Kassianos AJ, Hardy MY, Ju X, Vijayan D, Ding Y, Vulink AJ, McDonald KJ, Jongbloed SL, Wadley RB, Wells C, Hart DN, Radford KJ. 2012. Human CD1c (BDCA-1) (+) myeloid dendritic cells secrete IL-10 and display an immuno-regulatory phenotype and function in response to *Escherichia coli*. *Eur J Immunol* 42: 1512-1522.
- Khan AI, Hawkesworth S, Hossain D, Arifeen S, Moore S, Hills AP, Wells JC, Persson LA, Kabir I. 2012. Body Composition of Bangladeshi Children: Comparison and

MATER RESEARCH PUBLICATIONS

- Development of Leg-to-Leg Bioelectrical Impedance Equation. *Journal of Health, Population and Nutrition* 30: 281-290.
- Kildea S, Stapleton H, Murphy R, Low NB, Gibbons K. 2012. The Murri clinic: a comparative retrospective study of an antenatal clinic developed for Aboriginal and Torres Strait Islander women. *BMC Pregnancy Childbirth* 12: 159.
- Kindl K, van Havre N, Hardy JR. 2012. The Management of Type 2 Diabetes Mellitus in Palliative Care. *European Journal of Palliative Care* 19: 266-269.
- King RM, Day CJ, Hartley-Tassell LE, Connerton IF, Tiralongo J, McGuckin MA, Korolik V. 2012. Carbohydrate binding and gene expression by in vitro and in vivo propagated *Campylobacter jejuni* after Immunomagnetic Separation. *J Basic Microbiol* doi:10.1002/jobm.201100466: Epub.
- King NA, Horner K, Hills AP, Byrne NM, Wood RE, Bryant E, Caudwell P, Finlayson G, Gibbons C, Hopkins M, Martins C, Blundell JE. 2012. Exercise, appetite and weight management: understanding the compensatory responses in eating behaviour and how they contribute to variability in exercise-induced weight loss. *Br J Sports Med* 46: 315-322.
- Kirby E, Broom A, Good P, Wootton J, Adams J. 2012. Medical specialists' motivations for referral to specialist palliative care: a qualitative study. *BMJ Supportive & Palliative Care*: epub, doi:10.1136/bmjspcare-2012-000376.
- Knottenbelt G, Costi D, Stephens P, Beringer R, Davidson A. 2012. An audit of anesthetic management and complications of tracheo-esophageal fistula and esophageal atresia repair. *Paediatric Anaesthesia* 22: 268-274.
- Knuepffer C, Murdoch BE, Lloyd D, Lewis FM, Hinchliffe FJ. 2012. Reduced N400 semantic priming effects in adult survivors of paediatric and adolescent traumatic brain injury. *Brain Lang* 123: 52-63.
- Kostner K. 2012. High Dose Statin Therapy in Asians: Is as Relevant as in Western Populations? *Journal of Clinical and Preventive Cardiology* 1: 24-26.
- Kovacevic I, Hu J, Siehoff-Icking A, Opitz N, Griffin A, Perkins AC, Munn AL, Muller-Esterl W, Popp R, Fleming I, Jungblut B, Hoffmeister M, Oess S. 2012. The F-BAR protein NOSTRIN participates in FGF signal transduction and vascular development. *EMBO J* 31: 3309-3322.
- Kricker A, Disipio T, Stone J, Goumas C, Armes JE, Gertig DM, Armstrong BK. 2012. Bodyweight and other correlates of symptom-detected breast cancers in a population offered screening. *Cancer Causes Control* 23: 89-102.
- Krishnaprasad K, Andrews JM, Lawrance IC, Florin T, Geary RB, Leong RW, Mahy G, Bampton P, Prosser R, Leach P, Chitti L, Cock C, Grafton R, Croft AR, Cooke S, Doecke JD, Radford-Smith GL. 2012. Inter-observer agreement for Crohn's disease sub-phenotypes using the Montreal Classification: How good are we? A multi-centre Australasian study. *J Crohns Colitis* 6: 287-293.
- Kruske S, Lenthall S, Kildea S, Knight S, Hegney D. 2012. Rural and Remote Nursing. Pages. in Brown D, Edwards H, eds. *Lewis's Medical-Surgical Nursing* (3rd edition). Sydney: Elsevier.
- Lee N, Martensson LB, Kildea S. 2012. Cross sectional study of Australian midwives knowledge and use of sterile water injections for pain relief in labour. *Women Birth* doi:10.1016/j.wombi.2011.11.002: Epub.
- Lee N, Webster J, Beckmann M, Gibbons K, Smith T, Stapleton H, Kildea S. 2012. Comparison of a single vs. a four intradermal sterile water injection for relief of lower back pain for women in labour: A randomised controlled trial. *Midwifery* doi:10.1016/j.midw.2012.05.001: Epub.
- Lee-Tannock A, Thomas JT. 2012. Congenital absence of the ductus venosus. *Sound Effects*: 22-24.
- Levesque JP. 2012. N(o)-cadherin role for HSCs. *Blood* 120: 237-238.
- Levesque JP, Winkler IG, Rasko JE. 2012. Nichotherapy for stem cells: There goes the neighborhood. *BioEssays*: epub, doi: 10.1002/bies.201200111.
- Little JP, Adam C. 2012. Towards determining soft tissue properties for modelling spine surgery: current progress and challenges. *Med Biol Eng Comput* 50: 199-209.
- Little JP, Adam CJ. 2012. Patient-Specific Modeling of Scoliosis. Pages 103-131 in Gefen A, ed. *Studies in Mechanobiology, Tissue Engineering and Biomaterials: Patient-Specific Modeling in Tomorrow's Medicine*, vol. 9. Berlin Heidelberg: Springer.
- Little JP, Izatt MT, Labrom RD, Askin GN, Adam CJ. 2012. Investigating the change in three dimensional deformity for idiopathic scoliosis using axially loaded MRI. *Clin Biomechanics* 27: 415-421.
- Low H, Hoang A, Forbes J, Thomas M, Lyons JG, Nestel P, Bach LA, Sviridov D. 2012. Advanced glycation end-products (AGEs) and functionality of reverse cholesterol transport in patients with type 2 diabetes and in mouse models. *Diabetologia* 55: 2513-2521.
- Luo X, Hutley LJ, Webster JA, Kim YH, Liu DF, Newell FS, Widberg CH, Bachmann A, Turner N, Schmitz-Peiffer C, Prins JB, Yang GS, Whitehead JP. 2012. Identification of BMP and activin membrane-bound inhibitor (BAMBI) as a potent negative regulator of adipogenesis and modulator of autocrine/paracrine adipogenic factors. *Diabetes* 61: 124-136.
- Lynn LN, Cuskelly M, Gray PH, O'Callaghan M. 2012. Self-Regulation in Children Born with Extremely Low Birth Weight at 2 Years Old: A Comparison Study. *Infants and Young Children* 25: 136-148.

MATER RESEARCH PUBLICATIONS

- Mamun AA, Kinarivala MK, O'Callaghan M, Williams G, Najman J, Callaway L. 2012. Does hypertensive disorder of pregnancy predict offspring blood pressure at 21 years? Evidence from a birth cohort study. *J Hum Hypertens* 26: 288-294.
- Mascarenhas AR, Seebold JA, Cundy WJ, McGuire T, van Driel ML. 2012. Homeopathic remedies for preventing and treating acute respiratory tract infections in children. *Cochrane Database of Systematic Reviews*: CD005974.005971-CD005974.005978. .
- Mayfield S, Jauncey-Cooke J, Hough JL, Schibler A, Gibbons K, Bogossian FE. 2012. High flow nasal cannula therapy for respiratory support in children (Protocol). *Cochrane Database of Systematic Reviews*: CD009850.
- McDermott B. 2012. Patient aggression: a serious issue requiring a dedicated organisational response. *Med J Aust* 196: 154-155.
- McDermott BM, Cobham VE. 2012. Family functioning in the aftermath of a natural disaster. *BMC Psychiatry* 12: 55.
- McDermott B, Berry H, Cobham V. 2012. Social connectedness: a potential aetiological factor in the development of child post-traumatic stress disorder. *Aust N Z J Psychiatry* 46: 109-117.
- McGovern JA, Heinemann JR, Burke LJ, Dawson R, Parker TJ, Upton Z, Hooper JD, Manton KJ. 2012. Stratum basale keratinocyte expression of the cell surface glycoprotein CDCP1 during epidermogenesis and its role in keratinocyte migration. *Br J Dermatol*: epub, doi: 10.1111/bjd.12119.
- McGuckin MA, Thornton DJ. 2012. Mucins. Pages 329pp. in McGuckin MA, Thornton DJ, eds. *Methods in Molecular Biology*, vol. 842: Humana Press.
- McGuire TM. 2012. Safe use of drugs while breastfeeding. Pages. in Brodribb W, ed. *Breastfeeding management*, 4th ed. East Malvern Vic: Australian Breastfeeding Association.
- McGuire T. 2012. Urinary tract infection. *Pharmacy News*: 39-44.
- McGuire T. 2012. Encouraging breastfeeding. *Pharmacy News*: 41-48.
- McIntyre HD, Harvey D. 2012. DAFNE "Dose Adjustment for Normal Eating" Australian Update - 2012. *Diabetes Management Journal*. 41: 32-33.
- McIntyre HD, Gibbons KS, Flenady VJ, Callaway LK. 2012. Overweight and obesity in Australian mothers: epidemic or endemic? *Medical Journal of Australia* 196: 184-188.
- McIntyre HD, Lowe LP, Dyer AR, Metzger BE. 2012. Obesity in Pregnancy: Data from the Hyperglycemia and Adverse Pregnancy Outcome (HAPO) Study. Pages. in Ovesen PG, Moller Jensen D, eds. *Maternal Obesity and Pregnancy*. Heidelberg Springer.
- McIntyre HD, Peacock A, Miller YD, Koh D, Marshall AL. 2012. Pilot study of an individualised early postpartum intervention to increase physical activity in women with previous gestational diabetes. *Int J Endocrinol* 2012: 892019.
- McKeon C. 2012. Reducing the side effects of chemotherapy. *Aust Nurs J* 19: 41.
- McLeod DS, Warner JV, Henman M, Cowley D, Gibbons K, McIntyre HD. 2012. Associations of serum vitamin D concentrations with obstetric glucose metabolism in a subset of the Hyperglycemia and Adverse Pregnancy Outcome (HAPO) study cohort. *Diabet Med* 29: e199-204.
- Meredith P, Murray J, Wilson T, Mitchell G, Hutch R. 2012. Can spirituality be taught to healthcare professionals? *J Relig Health* 51: 879-889.
- Metzger BE, Gabbe SG, Persson B, Buchanan TA, Catalano PM, Damm P, Dyer AR, Hod M, Kitzmiller JL, Lowe LP, McIntyre HD, Oats JJ, Omori Y. 2012. The diagnosis of gestational diabetes mellitus: new paradigms or status quo? *J Matern Fetal Neonatal Med* 25: 2564-2569.
- Miller JC, Thomson CD, Williams SM, van Havre N, Wilkins GT, Morison IM, Ludgate JL, Skeaff CM. 2012. Influence of the glutathione peroxidase 1 Pro200Leu polymorphism on the response of glutathione peroxidase activity to selenium supplementation: a randomized controlled trial. *Am J Clin Nutr* 96: 923-931.
- Misra A, Nigam P, Hills AP, Chadha DS, Sharma V, Deepak KK, Vikram NK, Joshi S, Chauhan A, Khanna K, Sharma R, Mittal K, Passi SJ, Seth V, Puri S, Devi R, Dubey AP, Gupta For The Physical Activity Consensus Group S. 2012. Consensus physical activity guidelines for asian indians. *Diabetes Technology and Therapeutics* 14: 83-98.
- Moran R, Kuilenburg AB, Duley J, Nabuurs SB, Retno-Fitri A, Christodoulou J, Roelofsen J, Yntema HG, Friedman NR, van Bokhoven H, de Brouwer AP. 2012. Phosphoribosylpyrophosphate synthetase superactivity and recurrent infections is caused by a p.Val142Leu mutation in PRS-I. *Am J Med Genet A* 158A: 455-460.
- Morawska A, Gregory C, Burgess S. 2012. Parental beliefs about behaviour problems of their asthmatic children and interventions to support parenting. *J Child Healthcare* 16: 75-90.
- Morton A. 2012. Severe hyperkalaemia peripartum with magnesium sulphate *Obstetric Medicine* DOI: 10.1258/om.2011.110084: Epub.
- Morton A. 2012. A to X: the problem of categorisation of drugs in pregnancy - an Australian perspective. *Medical Journal of Australia* 196: 172.
- Morton A. 2012. Bilateral hilar syndrome. *Emerg Med J* 29: 678.

MATER RESEARCH PUBLICATIONS

- Morton A. 2012. Internal carotid artery dissection following chiropractic treatment in a pregnant woman with Systemic Lupus Erythematosus. *Chiropr Man Therap* 20: 38.
- Morton AP. 2012. Is reduction in peak heart rate while exercising a sign of hypoglycaemia in athletes with diabetes mellitus? *Diabet Med* 29: e312–320.
- Morton A, Noud M, Rasmussen L. 2012. Real-time continuous glucose monitoring in the Queen Lili'uokalani outrigger canoe race. *Australian Diabetes Educator* 15: 10-11.
- Munday J, Hines S, Wallace K. 2012. The clinical effectiveness of interventions to assist perioperative temperature management for women undergoing Caesarean Section. (Protocol) *The JBI Database of Systematic Reviews and Implementation Reports* 10: S138-S152.
- Murphy MT, Shillington MP, Mogridge DR, Journeaux SF. 2012. Birmingham mid-head resection hip arthroplasty in a young man with gigantism. *Journal of Arthroplasty* 27: 324 e313-326.
- Murphy M, Journeaux S, Hides J, Russell T. 2012. Does flexion of the femoral implant in total knee arthroplasty increase knee flexion: A randomised controlled trial. *Knee*: epub, doi: 10.1016/j.knee.2012.1010.1028.
- Nasreddine L, Naja F, Hills AP, Youssef SK, Chahine J, Hwalla N. 2012. Validity of predictive equations developed to estimate body fat from anthropometry and bioelectrical impedance analysis in 8-10 year-old children. *Clin Nutr* 31: 364-371.
- Nasser PD, Pacheco-Neto M, Cancado ELR, Duley JA, Chocair PR, Ferreira CS, Alves ANL, Fortini AS, Carrilho FJ, Ono-Nita SK. 2012. TPMT genotyping and azathioprine metabolite measurement in patients with auto-immune hepatitis and transplanted kidney. *Rev Assoc Med Bras* 58: S45.
- Nguyen DMT, Lecoultre V, Hills AP, Schutz Y. 2012. How does a Hilly Urban Environment Influence Daily Physical Activity in Obese Individuals? *J Phys Act Health*: Epub.
- Nguyen CD, Dakin C, Yuill M, Crozier S, Wilson S. 2012. The effect of sigh on cardiorespiratory synchronization in healthy sleeping infants. *Sleep* 35: 1643-1650.
- Nicholson C, Jackson CL, Marley JE, Wells R. 2012. The Australian Experiment: How Primary Healthcare Organizations Supported the Evolution of a Primary Healthcare System. *Journal of the American Board of Family Medicine* 25: S18-S26.
- Nigam P, Morton A. 2012. Are Maori women at increased risk of cardiac complications of Graves disease? *New Zealand Medical Journal* 125: 90-92.
- Norris RL, Paul M, George R, Moore A, Pinkerton R, Haywood A, Charles B. 2012. A stable-isotope HPLC-MS/MS method to simplify storage of human whole blood samples for glutathione assay. *J Chromatogr B Analyt Technol Biomed Life Sci* 898: 136-140.
- Oancea I, Png CW, Das I, Lourie R, Winkler I, Eri R, Subramaniam N, Jinnah HA, McWhinney BC, Levesque JP, McGuckin MA, Duley JA, Florin TH. 2012. A novel mouse model of veno-occlusive disease provides strategies to prevent thioguanine-induced hepatic toxicity. *Gut* doi: 10.1136/gutjnl-2012-302274: Epub.
- O'Callaghan F, O'Callaghan M, Williams G, Bor W, Najman J. 2012. Physical activity and intelligence: a causal exploration. *J Phys Act Health* 9: 218-224.
- Oei JL, Kingsbury A, Dhawan A, Burns L, Feller JM, Clews S, Falconer J, Abdel-Latif ME. 2012. Amphetamines, the pregnant woman and her children: a review. *J Perinatol* 32: 737-747.
- Pacheco-Neto M, Alves ANL, Fortini AS, Sumita NM, Mendes ME, Torres LHL, Duley JA, Nahas WC, Chocair PR. 2012. Pharmacokinetics of 6-thioguanine nucleotide and 6-methylmercaptapurine in a case of inadvertent combination therapy of azathioprine with allopurinol. *Rev Assoc Med Bras* 58: S14-17.
- Pacheco-Neto M, Alves ANL, Fortini AS, Sumita NM, Mendes ME, Torres LHL, Duley JA, Nahas WC, Chocair PR. 2012. A case report of azathioprine-induced recurrent acute pancreatitis associated with high levels of 6-thioguanine nucleotides in a renal transplant recipient. *Rev Assoc Med Bras* 58: S39-41.
- Pacheco-Neto M, Nasser PD, Alves ANL, Fortini AS, Sumita NM, Mendes ME, Ono-Nita SK, Cancado ELR, Torres LHL, Duley JA, Nahas WC, Chocair PR. 2012. Azathioprine-related severe diarrhea induced by high levels of 6-thioguanine nucleotides in renal transplant recipient carrying mutant thiopurine methyltransferase: a case report. *Rev Assoc Med Bras* 58: S42-44.
- Patel SA, Hoehn KL, Lawrence RT, Sawbridge L, Talbot NA, Tomsig JL, Turner N, Cooney GJ, Whitehead JP, Kraegen EW, Cleasby ME. 2012. Overexpression of the adiponectin receptor AdipoR1 in rat skeletal muscle amplifies local insulin sensitivity. *Endocrinology* 153: 5231-5246.
- Paynter J, Scott J, Beamish W, Duhig M, Heussler H. 2012. A Pilot Study of the Effects of an Australian Centre-Based Early Intervention Program for Children with Autism. *The Open Pediatric Medicine Journal* 6: 7-14.
- Pelekanos RA, Li J, Gongora M, Chandrakanthan V, Scown J, Suhaimi N, Brooke G, Christensen ME, Doan T, Rice AM, Osborne GW, Grimmond SM, Harvey RP, Little MH, Atkinson K. 2012. Comprehensive transcriptome and immunophenotype analysis of renal and cardiac MSC-like populations supports strong congruence with bone marrow MSC despite maintenance of distinct identities. *Stem Cell Res* 8: 58-73.

- Petersen SG, Perkins A, Gibbons K, Bertolone J, Devenish-Meares P, Cave D, Mahomed K. 2012. Can we use a lower intravaginal dose of misoprostol in the medical management of miscarriage? A randomised controlled study. *Aust N Z J Obstet Gynaecol*: epub, doi: 10.1111/ajo.12009.
- Phillips LK, Prins JB. 2012. Update on incretin hormones. *Annals of the New York Academy of Sciences* 1243: E55-74.
- Pritchard MA, Colditz PB, Cartwright D, Gray PH, Tudehope D, Beller E. 2012. Six-week postnatal depression predicts parenting stress profiles in mothers of preterm children. *Journal of Reproductive and Infant Psychology* 30: 303-311.
- Riedl S, Hughes I, Harris M, Leong GM, Beilby J, Sly P, Choong CS. 2012. GH secretagogue receptor gene polymorphisms are associated with stature throughout childhood. *Eur J Endocrinol* 166: 1079-1085.
- Riney CJ, Chong WK, Clark CA, Cross JH. 2012. Voxel based morphometry of FLAIR MRI in children with intractable focal epilepsy: implications for surgical intervention. *Eur J Radiol* 81: 1299-1305.
- Roberts JA, Norris R, Paterson DL, Martin JH. 2012. Therapeutic drug monitoring of antimicrobials. *British Journal of Clinical Pharmacology* 73: 27-36.
- Ruutu M, Thomas G, Steck R, Degli-Esposti MA, Zinkernagel MS, Alexander K, Velasco J, Strutton G, Tran A, Benham H, Rehaume L, Wilson RJ, Kikly K, Davies J, Pettit AR, Brown MA, McGuckin MA, Thomas R. 2012. beta-glucan triggers spondylarthritis and Crohn's disease-like ileitis in SKG mice. *Arthritis Rheum* 64: 2211-2222.
- Sanchez WY, de Veer SJ, Swedberg JE, Hong EJ, Reid JC, Walsh TP, Hooper JD, Hammond GL, Clements JA, Harris JM. 2012. Selective Cleavage of Human Sex Hormone-Binding Globulin by Kallikrein-Related Peptidases and Effects on Androgen Action in LNCaP Prostate Cancer Cells. *Endocrinology* 153: 3179-3189.
- Sandborn WJ, Gasink C, Gao LL, Blank MA, Johanns J, Guzzo C, Sands BE, Hanauer SB, Targan S, Rutgeerts P, Ghosh S, de Villiers WJ, Panaccione R, Greenberg G, Schreiber S, Lichtiger S, Feagan BG. 2012. Ustekinumab induction and maintenance therapy in refractory Crohn's disease. *N Engl J Med* 367: 1519-1528.
- Schins RPF, Albrecht C, Gerloff K, Van Berlo D. 2012. Genotoxicity of carbon nanotubes. Pages 150-173 in Donaldson K, Poland C, Duffin R, eds. *The Inhalation Toxicology of Carbon Nanotubes*. United Kingdom: Cambridge University Press.
- Schwartz KL, Nourse C. 2012. Panton-Valentine leukocidin-associated *Staphylococcus aureus* necrotizing pneumonia in infants: a report of four cases and review of the literature. *Eur J Pediatr* 171: 711-717.
- Scott AP, Laing NG, Mastaglia F, Dalakas M, Needham M, Allcock RJ. 2012. Investigation of NOTCH4 coding region polymorphisms in sporadic inclusion body myositis. *J Neuroimmunol* 250: 66-70.
- Serisier DJ. 2012. Inhaled antibiotics for lower respiratory tract infections: focus on ciprofloxacin. *Drugs Today (Barc)* 48: 339-351.
- Serisier DJ, Bowler SD. 2012. Randomized Controlled Trial of Nebulized Gentamicin in Non-Cystic Fibrosis Bronchiectasis... without Patient Blinding. *Am J Respir Crit Care Med* 186: 461.
- Serisier DJ, Tuck A, Matley D, Carroll MP, Jones G. 2012. Antimicrobial susceptibility and synergy studies of cystic fibrosis sputum by direct sputum sensitivity testing. *Eur J Clin Microbiol Infect Dis* doi: 10.1007/s10096-012-1687-6: Epub.
- Sharman JE, Holland DJ, Leano R, Kostner KM. 2013. Acute elevation of lipids does not alter exercise hemodynamics in healthy men: A randomized controlled study. *Atherosclerosis* 226: 234-237.
- Shaw M, Adam CJ, Izatt MT, Licina P, Askin GN. 2012. Use of the iPhone for Cobb angle measurement in scoliosis. *Eur Spine J* 21: 1062-1068.
- Shearman AD, Hou D, Dunster KR, Jardine L. 2012. Heating of gases during neonatal resuscitation: A bench study. *Resuscitation* 83: 369-373.
- Sheng YH, Hasnain SZ, Florin TH, McGuckin MA. 2012. Mucins in IBD and colorectal cancer. *Journal of Gastroenterology and Hepatology* 27: 28-38.
- Sheng YH, Hasnain SZ, Png CW, McGuckin MA, Linden SK. 2012. Techniques for assessment of interactions of mucins with microbes and parasites in vitro and in vivo. *Methods in Molecular Biology* 842: 297-312.
- Sheng YH, Triyana S, Wang R, Das I, Gerloff K, Florin TH, Sutton P, McGuckin MA. 2012. MUC1 and MUC13 differentially regulate epithelial inflammation in response to inflammatory and infectious stimuli. *Mucosal Immunol*: epub, doi: 10.1038/mi.2012.1098.
- Shenoy VV, Cook SJ, Parry AF, McIntyre HD. 2012. Audit of insulin detemir in pregnancy: a retrospective case series. *Diabetic Medicine* 29: 958-959.
- Shenoy V, Nisbett J, Petersen S, McIntyre HD. 2012. Neonatal hypothyroidism despite maternal T3 toxicosis: a management problem. *Obstetric Medicine*: Epub, doi:10.1258/om.2011.110074.
- Sina C, Lipinski S, Gavrilova O, Aden K, Rehman A, Till A, Rittger A, Podschun R, Meyer-Hoffert U, Haesler R, Midtling E, Putsep K, McGuckin MA, Schreiber S, Saftig P, Rosenstiel P. 2012. Extracellular cathepsin K exerts antimicrobial activity and is protective against chronic intestinal inflammation in mice. *Gut* doi: 10.1136/gutjnl-2011-300076: Epub.
- Soltani M, Haytabakhsh MR, Najman JM, Williams GM, O'Callaghan MJ, Bor W, Dingle K, Clavarino A. 2012.

MATER RESEARCH PUBLICATIONS

- Sleepless nights: the effect of socioeconomic status, physical activity, and lifestyle factors on sleep quality in a large cohort of Australian women. *Arch Womens Ment Health* 15: 237-247.
- Solyom S, Ewing AD, Rahrman EP, Doucet TT, Nelson HH, Burns MB, Harris RS, Sigmon DF, Casella A, Erlanger B, Wheelan S, Upton KR, Shukla R, Faulkner GJ, Largaespada DA, Kazazian HH. 2012. Extensive somatic L1 retrotransposition in colorectal tumors. *Genome Res*: Epub.
- Song SH, Kim BN, Choi NH, Ryu J, McDermott B, Cobham V, Park S, Kim JW, Hong SB, Shin MS, Yoo HJ, Cho SC. 2012. A 30-month prospective follow-up study of psychological symptoms, psychiatric diagnoses, and their effects on quality of life in children witnessing a single incident of death at school. *J Clin Psychiatry* 73: e594-600.
- Sourris KC, Harcourt BE, Tang PH, Morley AL, Huynh K, Penfold SA, Coughlan MT, Cooper ME, Nguyen TV, Ritchie RH, Forbes JM. 2012. Ubiquinone (coenzyme Q10) prevents renal mitochondrial dysfunction in an experimental model of type 2 diabetes. *Free Radical Biology and Medicine* 52: 716-723.
- Srikanth V, Westcott B, Forbes J, Phan TG, Beare R, Venn A, Pearson S, Greenway T, Parameswaran V, Muench G. 2012. Methylglyoxal, cognitive function and cerebral atrophy in older people. *Journal of Gerontology: Medical Sciences* doi: 10.1093/gerona/gls100: Epub.
- Steenkamp M, Rumbold A, Barclay L, Kildea S. 2012. A population-based investigation into inequalities amongst Indigenous mothers and newborns by place of residence in the Northern Territory, Australia. *BMC Pregnancy Childbirth* 12: 44.
- Steenkamp M, Rumbold AR, Kildea S, Bar-Zeev SJ, Kruske S, Dunbar T, Barclay L. 2012. Measuring what matters in delivering services to remote-dwelling Indigenous mothers and infants in the Northern Territory, Australia. *Aust J Rural Health* 20: 228-237.
- Stewart A, Inglis G, Jardine L, Koorts P, Davies MW. 2012. A randomised controlled trial of blended learning to improve the newborn examination skills of medical students. *Arch Dis Child Fetal Neonatal Ed* doi: 10.1136/archdischild-2011-301252: Epub.
- Stewart A, Inglis GD, Jardine LA, Koorts P, Davies MW. 2012. Prophylactic antibiotics to reduce morbidity and mortality in newborn infants with intercostal catheters. *Cochrane Database Syst Rev* 4: CD008173.
- Sturgess D, Venkatesh B. 2012. Plasma free cortisol and b-type natriuretic peptide in septic shock. *Anaesthesia and Intensive Care* 40: 95-98.
- Sun L, Zhang Z, Bailey TL, Perkins AC, Tallack MR, Xu Z, Liu H. 2012. Prediction of novel long non-coding RNAs based on RNA-Seq data of mouse Klf1 knockout study. *BMC Bioinformatics* 13: 331.
- Suresh S, Crowe E. 2012. Family-centered Care: Generating Evidence in Pediatric Clinical Practice. *Am J Respir Crit Care Med* 186: 1073-1074.
- Suresh S, Mamun AA, O'Callaghan M, Sly PD. 2012. The impact of birth weight on peak lung function in young adults. *Chest* doi: 10.1378/chest.11-2976: Epub.
- Sutton VR, Sedelies K, Dewson G, Christensen ME, Bird PI, Johnstone RW, Kluck RM, Trapani JA, Waterhouse NJ. 2012. Granzyme B triggers a prolonged pressure to die in Bcl-2 overexpressing cells, defining a window of opportunity for effective treatment with ABT-737. *Cell Death Dis* doi:10.1038/cddis.2012.73: Epub.
- Tallack MR, Magor GW, Dartigues B, Sun L, Huang S, Fittock JM, Fry SV, Glazov EA, Bailey TL, Perkins AC. 2012. Novel roles for KLF1 in erythropoiesis revealed by mRNA-seq. *Genome Res* doi: 10.1101/gr.135707.111: Epub.
- Tanhoffer RA, Tanhoffer AI, Raymond J, Hills AP, Davis GM. 2012. Comparison of methods to assess energy expenditure and physical activity in people with spinal cord injury. *J Spinal Cord Med* 35: 35-45.
- Terrill PI, Wilson SJ, Suresh S, Cooper DM, Dakin C. 2012. Application of recurrence quantification analysis to automatically estimate infant sleep states using a single channel of respiratory data. *Med Biol Eng Comput* 50: 851-865.
- Thallas-Bonke V, Coughlan MT, Tan AL, Harcourt BE, Morgan PE, Davies MJ, Bach LA, Cooper ME, Forbes JM. 2013. Targeting the AGE-RAGE axis improves renal function in the context of a healthy diet low in advanced glycation end-product content. *Nephrology (Carlton)* 18: 47-56.
- Thomas JT, Petersen S, Cincotta R, Lee-Tannock A, Gardener G. 2012. Absent ductus venosus--outcomes and implications from a tertiary centre. *Prenat Diagn* 32: 686-691.
- Thomas EC, Gunter JH, Webster JA, Schieber NL, Oorschot V, Parton RG, Whitehead JP. 2012. Different Characteristics and Nucleotide Binding Properties of Inosine Monophosphate Dehydrogenase (IMPDH) Isoforms. *PLoS One* 7: e51096.
- Thorp AA, Healy GN, Winkler E, Clark BK, Gardiner PA, Owen N, Dunstan DW. 2012. Prolonged sedentary time and physical activity in workplace and non-work contexts: a cross-sectional study of office, customer service and call centre employees. *Int J Behav Nutr Phys Act* 9: 128.
- Timmins NE, Kiel M, Gunther M, Heazlewood C, Doran MR, Brooke G, Atkinson K. 2012. Closed system isolation and scalable expansion of human placental mesenchymal stem cells. *Biotechnology and Bioengineering* 109: 1817-1826.
- Ting JY. 2012. Impact of interhospital transfer on outcomes for patients with trauma. *J Trauma Acute Care Surg* 72: 1723.
- Ting JY. 2012. Controlled trials of transport modality in trauma are feasible. *Acad Emerg Med* 19: 481; author reply 482.

MATER RESEARCH PUBLICATIONS

- Ting JY. 2012. Drowning associated pneumonia. *Resuscitation* 83: e155.
- Ting JY. 2012. The rewarming benefit of anterior torso heat pad application in mildly hypothermic conscious adult trauma patients remains inconclusive. *Scand J Trauma Resusc Emerg Med* 20: 17.
- Ting JY. 2012. The potential role of allocation preference, perceived control group inferiority and delays to percutaneous coronary reperfusion on patient, consent provider and recruiting clinician views of a prehospital induced hypothermia trial. *Resuscitation* 83: e75; author reply e77.
- Ting J. 2012. Helicopter vs ground transportation for patients with trauma. *JAMA* 308: 563-564; author reply 565.
- Todd DA, Wright A, Broom M, Chauhan M, Meskell S, Cameron C, Perdomi AM, Rochefort M, Jardine L, Stewart A, Shadbolt B. 2012. Methods of weaning preterm babies <30 weeks gestation off CPAP: a multicentre randomised controlled trial. *Arch Dis Child Fetal Neonatal Ed* 97: F236-240.
- Tsiros MD, Buckley JD, Howe PRC, Olds T, Walkley J, Taylor L, Mallows R, Hills AP, Kagawa M, Coates AM. 2012. Day-to-day physical functioning and disability in obese 10- to 13-year-olds. *Pediatric Obesity* doi: 10.1111/j.2047-6310.2012.00083.x. : Epub.
- Tudehope DI, Page D, Gilroy M. 2012. Infant formulas for preterm infants: In-hospital and post-discharge. *J Paediatr Child Health* 48: 768-776.
- Tudehope D, Papadimos E, Gibbons K. 2012. Twelve-year review of neonatal deaths in the delivery room in a perinatal tertiary centre. *J Paediatr Child Health*: epub, doi: 10.1111/jpc.12021.
- Tudehope D, Gibbons K, Cormack B, Bloomfield F. 2012. Growth monitoring of low birthweight infants: What references to use? *J Paediatr Child Health* 48: 759-767.
- Valery PC, Ibiebele T, Harris M, Green AC, Cotterill A, Moloney A, Sinha AK, Garvey G. 2012. Diet, physical activity, and obesity in school-aged indigenous youths in northern australia. *J Obes* doi:10.1155/2012/893508: Epub.
- Van Asseldonk DP, Oancea I, Jharap B, Duley JA, Florin THJ. 2012. Is thioguanine-associated sinusoidal obstruction syndrome avoidable? Lessons learned from 6-thioguanine treatment of inflammatory bowel disease and a mouse model. *Rev Assoc Med Bras* 58: 58-13.
- van Eps C, Hawley C, Jeffries J, Johnson DW, Campbell S, Isbel N, Mudge DW, Prins J. 2012. Changes in Serum Prolactin, Sex Hormones and Thyroid Function with Alternate Nightly Nocturnal Home Haemodialysis. *Nephrology (Carlton)* 17: 42-47.
- Vijayan D, Radford KJ, Beckhouse AG, Ashman RB, Wells CA. 2012. Mincle polarizes human monocyte and neutrophil responses to *Candida albicans*. *Immunol Cell Biol* doi:10.1038/icb.2012.24: Epub.
- Visinoni S, Khalid NF, Joannides CN, Shulkes A, Yim M, Whitehead J, Tiganis T, Lamont BJ, Favalaro JM, Proietto J, Andrikopoulos S, Fam BC. 2012. The role of liver fructose-1,6-bisphosphatase in regulating appetite and adiposity. *Diabetes* 61: 1122-1132.
- Visser S, Martin M, Serisier DJ. 2012. Improvements in Cystic Fibrosis Lung Disease and Airway Inflammation Associated with Etanercept Therapy for Rheumatoid Arthritis: A Case Report. *Lung* 190: 578-581.
- White DL, Brown AL, D'Andrea RJ, Rice AM. 2012. Unraveling the "known unknowns": lessons and reflections from the new directions in leukemia research 2012 conference. *Cancer Res* 72: 4300-4303.
- Wild K, Maypilama EL, Kildea S, Boyle J, Barclay L, Rumbold A. 2012. 'Give us the full story': Overcoming the challenges to achieving informed choice about fetal anomaly screening in Australian Aboriginal communities. *Soc Sci Med*: epub, doi: 10.1016/j.socscimed.2012.1010.1031.
- Wilkinson SA, Stapleton H. 2012. Overweight and obesity in pregnancy: The evidence-practice gap in staff knowledge, attitudes and practices. *Aust N Z J Obstet Gynaecol* 52: 588-592.
- Wilkinson SA, McIntyre HD. 2012. Evaluation of the 'healthy start to pregnancy' early antenatal health promotion workshop: a randomized controlled trial. *BMC Pregnancy Childbirth* 12: 131.
- Wilkinson SA, Sailsbury C. 2012. Diet and pregnancy: Nutrition for a growing baby and a glowing mum. *O&G Magazine* 14: 35-37.
- Wilkinson S, de Jersey S, Karpavicius J. 2012. You are what your mother eats. . *Nursing Review*: 34-35.
- Wilkinson SA, Hinchliffe F, Hough J, Chang A. 2012. Baseline evidence-based practice use, knowledge, and attitudes of allied health professionals: a survey to inform staff training and organisational change. *J Allied Health* 41: 177-184.
- Willcox JC, Campbell KJ, van der Plight P, Hoban E, Pidd D, Wilkinson S. 2012. Excess gestational weight gain: an exploration of midwives' views and practice. *BMC Pregnancy Childbirth* 12: 102.
- Winkler IG, Barbier V, Nowlan B, Jacobsen RN, Forristal CE, Patton JT, Magnani JL, Levesque JP. 2012. Vascular niche E-selectin regulates hematopoietic stem cell dormancy, self renewal and chemoresistance. *Nat Med* 18: 1651-1657.

MATER RESEARCH PUBLICATIONS

Winkler IG, Bendall LJ, Forristal CE, Helwani FM, Nowlan B, Barbier V, Shen Y, Cisterne A, Sedger LM, Levesque JP. 2012. B-lymphopoiesis is stopped by mobilizing doses of G-CSF and is rescued by overexpression of the anti-apoptotic protein Bcl2. *Haematologica* doi:10.3324/haematol.2012.069260: Epub.

Winkler IG, Pettit AR, Raggatt LJ, Jacobsen R, Forristal CE, Barbier V, Nowlan B, Cisterne A, Bendall LJ, Sims NA, Levesque JP. 2012. Hematopoietic stem cell mobilizing agents G-CSF, cyclophosphamide or AMD3100 have distinct mechanisms of action on bone marrow HSC niches and bone formation. *Leukemia* 26: 1594-1601.

Wu CJ, Chang AM, Courtney M, Ramis M. 2012. Using user-friendly telecommunications to improve cardiac and diabetes self-management program: A pilot study. *Journal of Evaluation in Clinical Practice* 18: 695-697.

Wu CJ, Chang AM, Courtney M, Kostner K. 2012. Peer supporters for cardiac patients with diabetes: a randomized controlled trial. *Int Nurs Rev* 59: 345-352.

Wu JY, McGown IN, Lin L, Achermann JC, Harris M, Cowley DM, Aftimos S, Neville K, Choong C, Cotterill AM. 2012. A novel NR5A1 variant in an infant with elevated testosterone from an Australasian Cohort of 46,XY patients with Disorders of Sex Development. *Clin Endocrinol (Oxf)*: epub,

doi: 10.1111/cen.12012.

Yap FY, Kantharidis P, Coughlan MT, Slattery R, Forbes JM. 2012. Advanced Glycation End Products as Environmental Risk Factors for the Development of Type 1 Diabetes. *Current Drug Targets* 13: 526-540.

Yarnold JE, Hamilton BR, Welsh DT, Pool GF, Venter DJ, Carroll AR. 2012. High resolution spatial mapping of brominated pyrrole-2-aminoimidazole alkaloids distributions in the marine sponge *Stylissa flabellata* via MALDI-mass spectrometry imaging. *Mol Biosyst* 8: 2249-2259.

Yazbeck R, Dawson P, Rogers N, West C, Keogh R, Wallace D, Polyak S, Nowak K, Burt R, Taylor J, Dunn L, Philp A, Parkinson-Lawrence E. 2012. Indigenous Health: ACTION on Prevention - 50th Annual Australian Society for Medical Research National Scientific Conference. *Rural Remote Health* 12: 2256.

Yong MR, Izatt MT, Adam CJ, Labrom RD, Askin GN. 2012. Secondary Curve Behaviour in Lenke Type 1C Adolescent Idiopathic Scoliosis Following Thoracoscopic Selective Anterior Thoracic Fusion. *Spine* 37: 1965-1974.

Zanudin A, Gray PH, Burns Y, Danks M, Watter P, Poulsen L. 2013. Perinatal factors in non-disabled ELBW school children and later performance. *J Paediatr Child Health* 49: E62-67.

MATER RESEARCH CURRENT PATENTS

Mater Research number	Title	Application number	Priority date	Country	Status
MMRI-15	A method of Immunomodulation	PCT/AU2003/001038	15-Aug-02	Australia Canada Europe United States New Zealand	Granted Application Application Application Granted
MMRI-32	Treatment & prophylaxis	PCT/AU2008/001652	10-Dec-07	Australia United States	Application Application
mmri-41	Improved treatment & prophylaxis	PCT/AU2008/001810	10-Dec-07	Australia Europe United States Canada	Application Application Application Application

HOW YOU CAN HELP MATER

Community support helps Mater to continue its work in the community, its ground-breaking research and its exceptional care.

MAKE A DONATION

Whatever the amount, all donations make a positive impact. A gift to Mater could support a life-saving research project, enhance patient care or help a family in need.

MAKE A MONTHLY DONATION

A growing number of people are supporting Mater with a regular monthly gift by direct debit or credit card, or through payroll deductions. Become a monthly donor and you will help ensure we can fund life-changing research and healthcare programs. From as little as \$5 per month you can make a real difference.

MATER FUTURE FUND

The Mater Future Fund provides a permanent self-sustaining source of income for world-class healthcare and research projects at Mater for generations to come. Mater is committed to building the Mater Future Fund. In 2014 Mater Foundation will celebrate its 25th anniversary and with your generous support we aim to have a \$20 million capital base.

LEAVE A GIFT IN YOUR WILL

A gift in your Will can help ensure that Mater continues to provide exceptional care for future generations.

BUY A LOTTERY TICKET

By purchasing a ticket in a Mater lottery you can change both your life and the lives of patients at Mater. The Mater Prize Home lottery gives everyone the opportunity to win a million dollar home for as little as \$2. The Cars for Cancer lottery gives you the chance to win a high-performance car whilst helping cancer research and treatment. The Cash for Kids lottery raises funds for Mater Mothers' and Mater Children's Hospitals and the Mater chicks in pink lottery supports breast cancer services and research at Mater.

TO SUPPORT MATER
PLEASE VISIT
WWW.MATERFOUNDATION.ORG.AU
OR CALL 07 3163 8000

MATER FOUNDATION WOULD
LIKE TO THANK OUR SUPPORTERS
FOR THEIR CONTRIBUTIONS
THROUGHOUT THE YEAR IN 2012.
YOUR SUPPORT ALLOWS US TO
CONTINUE PROVIDING EXCEPTIONAL
CARE TO QUEENSLANDERS.

THANK YOU

Mater Foundation would like to thank the following supporters for their generous contributions in 2012. Your support allows us to continue providing exceptional care to Queenslanders.

The Advertising Works
Ahura Resorts
Estate of Vsevolod Alexandroff
Mr Nicholas & Mrs Alexandra Amarandos
Angelo Andronis
ANZ Banking Group Ltd
Armstrong Family, Jimboomba Police, Bunnings Browns Plains & Ulysses
Arrow Energy
ATCO Structures & Logistics Pty Ltd
Australand
Australian Leisure & Hospitality Group
Estate of Stanley Alfred Bain
Mr Adrian Kirwan, Bartholomeusz Kirwan Real Estate
Bendigo Bank
BHP Billiton
BICARE Inc
Big W
BMD Group
Brisbane Convention & Exhibition Centre
Canturi
Carlton United Brewery
Rennie, Teresa & Chrissy Casasola
Channel Nine
Mrs Cathryn Chatburn



Lions share

This year Lions Australia donated a generous \$100 000 to purchase specialised research equipment that will assist prostate cancer research at Mater Research. This generous donation helped make a significant difference to the lives of thousands of men and their families who will one day benefit from this research. Thank you Lions Australia



Twin touch

Anecdotal evidence suggested twin babies often seemed to settle better when they shared a cot in the neonatal unit. Thanks to a donation from Amway's One by One Foundation, premature and critically ill twin babies at Mater are able to grow and develop side-by-side in two customised neonatal cots valued at \$18 400. Thank you Amway.

Child's Play
Mr & Mrs Brett & Maria Clark
The Coffee Club
Commonwealth Bank Staff Community Fund
Construction Income Protection Qld
Covidien
CPC Constructions
Ms Heather Craig
Cromwell Operations Pty Ltd
Mr Peter De Angelis
Digital Genius
Dry July Foundation
Mr Eddie Duncan
Easternwell
febfast Limited
Dr Peter & Mrs Jeanie Ferguson
Marian & EH Flack Trust
Mr Tony Foster
The Frangipani Foundation

THANK YOU

Fun over Fifty
Mr John & Mrs Kay Gallagher
Gambling Community Benefit Fund
Mr Simon George and Sons
GJI Pty Ltd
GOA Billboards
Golden Casket
GPS Old Boys Rugby Union Club
Greek Orthodox Community of St George Brisbane
Andrew Greig & Ingrid Asbury
Estate of Aldwynne JN Griffiths
Estate of Melville S Hampson
IGA
Incolink
International Women's Day Fun Run/Walk
IPG Print
Ipswich City Council
Ivvy Wired Realtime
JCDecaux
Mr Alan Jones AO
Josh Develop
K&V Enterprises
Kellies Antiques
The Knappick Foundation
Fundraising efforts of Mary Lakey & Committee
Estate of Mrs DM Lee
Lexus of Brisbane
Lion Nathan
Lions Prostate Cancer Research & Treatment Project
Liquor Marketing Group
L J Hooker Land Marketing
Mancorp Quality Homes
Fundraising efforts of Mater Mothers' Hospital Auxiliary
Fundraising efforts of Mater Private Hospital Redland Ladies Auxiliary
Ms Pip McConnel Oats
Mrs Karen McIntyre
Medline Australia
MHS Staff Association
Misa Constructions Pty Ltd
Karl Morris & Family
MTA Travel
nib foundation
The Olivia's Lunch Committee
OneSteel Reinforcing Pty Ltd
Onsite Rental Group
Estate of Vere O'Reilly
Paint Place
Paynter Dixon
Mr Cesar Perilla
Pernod Ricard Australia
FA Pidgeon & Son Pty Ltd
Mr Angelo Pippas
Pitcher Partners Accountants
Plantation Homes
Preston James Fund
Queensland Hotel Association
Queensland Marine Centre



Breast is best

Evidence suggests that premature babies, particularly those born at or before 28 weeks gestation, have better health outcomes if they are fed early with expressed breast milk.

As mothers are not always able to express milk for their baby or do not have the supply necessary to provide the quantity of milk needed on a daily basis, Mater receives regular donations from the Mothers' Milk Bank in northern New South Wales.

Thanks to a \$10 000 grant from the Commonwealth Bank's Staff Community Fund, Mater is able to keep the milk in the frozen state which it is delivered, to enable prolonged use.

Thank you Commonwealth Bank.

THANK YOU



TRI to Fight Cancer

Since 2006 Mater has raised more than \$3 million through its Smiling for Smiddy program, a series of cycling and triathlon activities raising funds for cancer research in memory of Adam Smiddy, a keen triathlete who passed away from an aggressive melanoma aged 26. This year budding triathlete Brian Williams raised \$12 000 participating in the world-famous Noosa Triathlon as part of Team Smiddy. Thank you Brian.

Queensland Mining Industry Health & Safety Conference
Racecourse Road Turns Pink
Realestate.com.au
John T Reid Charitable Trusts
JJ Richards & Sons Pty Ltd
Robert Clark Creative
Ronald McDonald House Charities
Russell's Solicitors
Estate of Ena Amy Ryan
Sealy of Australia
Mr Tim Sharp
The Sheehan-Birrell Foundation
John & Robynne Siemon & Mrs JR Siemon
Sigma Company Ltd
Simon Family
Six String Design
1300SmilesDentists - Dr Daryl & Lisa Holmes
Smiling for Smiddy
Estate of Robert Southwell
Springfield Land Corporation
Estate of Stephan Stareprawo
Mr Alan & Mrs Sandra Stephens
Stockland
Summit Fleet Leasing & Management
Suncorp
Sunnybank Community Sports Club
Suzuki Queensland
Synthes Asia-Pacific

Talbot Family Foundation Pty Ltd
Ms Vivian Tan
Tomkins Commercial & Industrial Builders
Toowoomba Prostate Cancer Luncheon
Transfab Pty Ltd
Estate of Ronald Leslie Tulk
Turner & Townsend Pty Ltd
VCFS Foundation Qld
Mr Henry & Mrs Mary Wagner
Estate of Nell Wallace
Mr John Waller
Waterfront Place
Fundraising efforts of Mr Shaune Watts
The T Weston & M Morrison Perpetual Charitable Trust
The White Family
Mr Graeme Wilson
Yu Feng Pty Ltd
Dr Felice & Mrs Margredel Zaccari
Zupps

Mater Foundation would also like to thank all of our donors, lottery supporters and those who have participated in our fundraising events:

Breast Ever Brunch 2012
Cape Crusade 2012
Face your Fear – jump for cancer
International Women's Day Fun Run/Walk
Mater Little Miracles 5ks 2012
Miles for Miracles
Smiling for Smiddy
The Sunday Mail Suncorp Bridge to Brisbane 2012
Trek Mount Kilimanjaro for prostate cancer!
Walk for Kids 2012

WANT TO SUPPORT MATER?
CALL 07 3163 8000 OR VISIT
WWW.MATERFOUNDATION.ORG.AU
TO FIND OUT HOW YOU
CAN HELP TODAY.

MATER'S BOARD MEMBERS

Mater would like to thank our committed board and committee members for their hard work throughout 2012.

MATER HEALTH SERVICES BOARD MEMBERS

Prof John McAuliffe (Chair) (Resigned June 2012)
Brian Flannery (Chair) (Appointed July 2012) (Deputy Chair) (Resigned June 2012)
Vince O'Rourke (Deputy Chair) (Appointed July 2012)
Sr Pauline Burke RSM
Peter Pearce
John Reynolds
Prof Russel Strong (Resigned December 2012)
Sr Mary Tinney RSM
Prof Catherine Turner
Terry Crawford
Laurence Rogencamp (Company Secretary)

MATER FOUNDATION BOARD MEMBERS

Phil Hennessey (Chair)
Simon Porter (Deputy Chair)
Kate Farrar
Xavier Kelly
John McCoy
Betty McGrath
Dr Clare Nourse (Resigned February 2012)
Bill Noye
Joseph O'Brien
Dr John O'Donnell
Allan Pidgeon (Appointed June 2012)
Prof John Prins
Rebecca Pullar
Laurie Rogencamp
Dr Bill Ryan
Jason Titman

MATER RESEARCH BOARD MEMBERS

Mater Research Board Members
Prof Ian Zimmer (Chair)
Dr Carrie Hillyard (Deputy Chair)
Jim Walker AM
Dr John O'Donnell
Prof Geoff Kiel
Sr Deirdre Gardiner RSM (Resigned December 2012)
Prof Brandon Wainwright
Prof David McIntyre
Stephen Denaro (Company Secretary)

MATER'S BOARD MEMBERS

MATER FOUNDATION COMMITTEE MEMBERS

Denny Baker
David Bell
Dyls Bertelsen
A/ Prof Mark Bowles
Prof Frank Bowling
Jane Brass (Resigned May 2012)
Lynne Elliott (Appointed May 2012)
Peter Johansen
Dr Dominic Katter
Judy Luxton
Carmel MacMillan (Appointed May 2012)
Carolyn McSweeney
Chris Perkins
Michael Petersen (Appointed June 2012)
Matthew Rennie
Andrew Sexton
Sarah Smedley (Resigned March 2012)
Prof David Tudehope
Justin Walsh (Appointed January 2012)

BETTY MCGRATH AWARD 2012

Mark Smoothy

MATER STATISTICS

Mater patients	Patient discharges	Patient days	Theatre patients	Beds
Mater Private Hospital Brisbane	28440	98165	11956	328
Mater Private Hospital Redland	8307	16928	4414	71
Mater Mothers' Hospital	10129	40661	3901	121
Mater Mothers' Private Hospital	5944	34299	2418	128
Mater Children's Hospital	17053	42306	6234	142
Mater Children's Private Hospital	4996	9625	2997	39
Mater Adult Hospital	20702	53387	6368	213
TOTAL	95571	295371	38288	1042

Emergency attendances

Mater Adult Hospital Emergency	36799
Mater Children's Hospital Emergency	44794
Mater Private Emergency Care Centre	18409

Births

Mater Mothers' Hospital	5571
Mater Mothers' Private Hospital	4618
Mater Mothers' Private Redland	397

MATER STATISTICS

Outpatient clinical

Mater Mothers' Hospital	88723
Mater Children's Hospital	80306
Mater Adult Hospital	176567

Diagnostic services

Mater Mothers' Hospital	38600
Mater Children's Hospital	89085
Mater Adult Hospital	176567

Mater Foundation funding

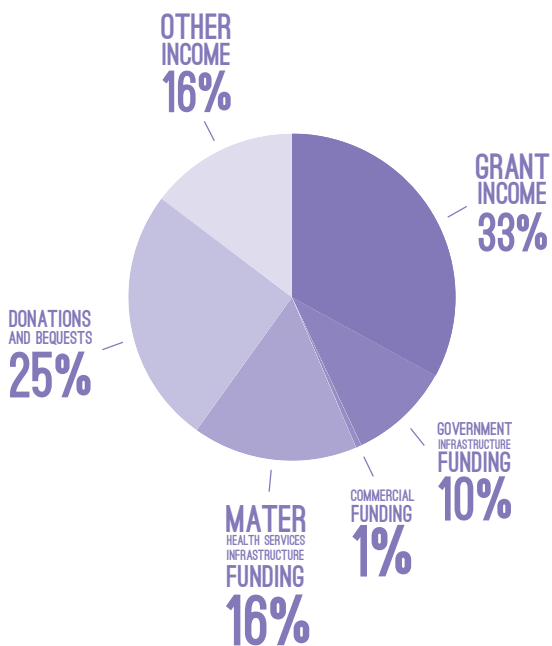
Capital works	\$184 952.58
Clinical programs and support	\$475 930.42
Education	\$197 486.82
Equipment	\$1 229 854.68
Mission	\$77 514.17
Research	\$5 433 229.58
TOTAL	\$7 598 968.25

MATER STATISTICS

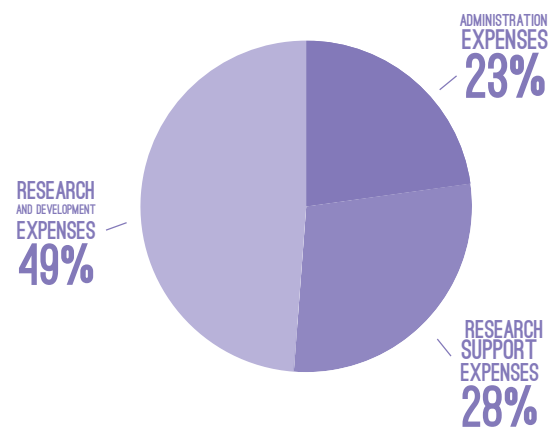
Mater Research revenue	
Grant income	\$6 041 893
Donations and bequests	\$4 655 835
Mater Health Services infrastructure funding	\$3 000 000
Government infrastructure funding	\$1 849 002
Commercial funding	\$100 000
Other income	\$2 695 996
TOTAL	\$18 342 726

Mater Research expenditure	
Research and development expenses	\$8 264 456
Research support expenses	\$4 808 781
Administration expenses	\$3 860 301
TOTAL	\$16 933 538

2012 REVENUE STREAMS BY TYPE



2012 EXPENDITURE STREAMS BY TYPE





This publication is printed on Sovereign Offset, a premium uncoated, high white paper certified by the Forestry Stewardship Council, sourced only from responsibly managed forests and manufactured using elemental chlorine free pulps.

WWW.MATER.ORG.AU

TOGETHER WE CAN ACHIEVE MORE BECAUSE
E **BECAUSE** TOGETHER WE CAN ACHIEVE MO
ORE BECAUSE **TOGETHER** WE CAN ACHIEVE M
IER WE CAN ACHIEVE MORE BECAUSE TOGET
TOGETHER **WE** CAN ACHIEVE MORE BECAUS
SE TOGETHER WE **CAN** ACHIEVE MORE BECA
IER WE CAN ACHIEVE MORE BECAUSE TOGET
SE TOGETHER WE CAN **ACHIEVE** MORE BECAU
AUSE TOGETHER WE CAN ACHIEVE **MORE** BE
USE TOGETHER WE CAN ACHIEVE MORE BECA
ETTER WE CAN ACHIEVE MORE BECAUSE