

KIDS IN MIND PRIVATE CLINIC is a private practice that addresses the emotional and psychological needs of children, young people and their families, providing high quality care through a team of experienced professionals.

Psychiatric and allied health practitioners at KIDS IN MIND PRIVATE CLINIC have extensive experience in assessment, case management and evidence-based therapeutic interventions that enables families, parents, young people and health professionals to negotiate the challenges of mental health issues.

Professional services at KIDS IN MIND PRIVATE CLINIC are provided by independent private practitioners.

KIDS IN MIND PRIVATE CLINIC is committed to service provision guided by Mater core values and philosophy.



CONTACT DETAILS

KIDS IN MIND PRIVATE CLINIC

Level 5

Mater Private Hospital

Annerley Road Campus

41 Annerley Road, South Brisbane 4101

Phone: (07) 3163 6102

Fax: (07) 3163 6122

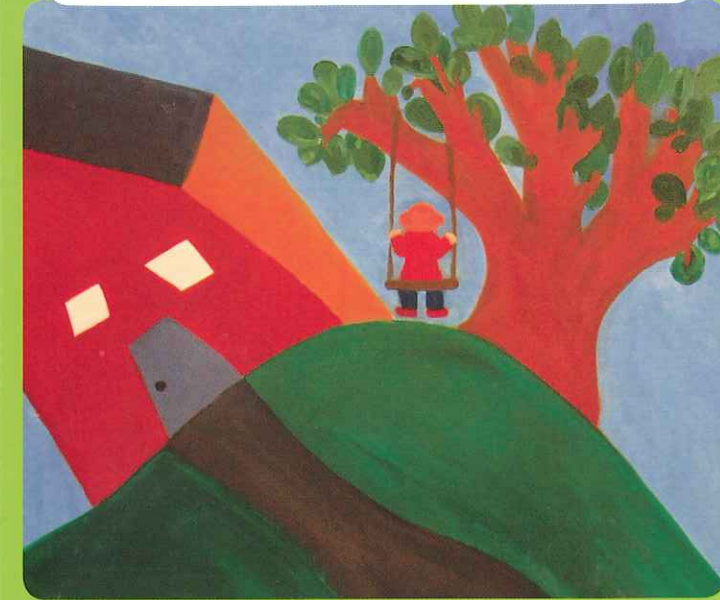
Email: KIM.Private@mater.org.au

Web: www.kidsinmind.org.au



* Original paintings by Shelley Perkoulidis

KIDS IN MIND PRIVATE CLINIC



Parents, Young People,
Families, Health, Education
and Welfare Professionals

WITH CONCERNS ABOUT

- anxiety
- family conflict
- depression
- eating disorders
- relationships
- substance misuse

IN CHILDREN, YOUNG PEOPLE AND
THEIR FAMILIES

Exceptional People. Exceptional Care.

DIRECTOR

Associate Professor Brett McDermott
B.MedSci, MBBS, FRANZCP, CertChildPsych, MD



Associate Professor Brett McDermott is an experienced child and adolescent psychiatrist. His current appointments include Director of the Mater Child and Youth Mental Health Service, Associate Professor at the University of Queensland, By-Fellow Churchill College, Cambridge University, UK and Director of beyondblue: the national depression initiative. His areas of clinical specialty are eating disorders, children with emotional trauma and emotional and behavioural problems in children with developmental disabilities.

Associate Professor Brett McDermott states,

'Many families and young people are affected by mental health issues that cause personal distress, difficulties in the family, school, workplace and occasionally the wider community.'

'These issues are more common than many people appreciate. Recent Australian research found that 11% of children and adolescents would benefit from a mental health intervention.'

PRACTITIONERS

Medical Specialists

Dr William Bor is an experienced Child and Adolescent Psychiatrist. His interests include aggression management in families and young people with Autistic Spectrum Disorders. Dr Bor only receives

referrals through specialists and staff associated with the Mater Health Services.

Dr Lyndall Kleinschmidt is a Consultant Child and Adolescent Psychiatrist with comprehensive experience in Community Child and Adolescent Psychiatry. She has a particular interest in Psychotherapy with children, teenagers and families.

Dr Alex Radojevic is a Consultant Child and Adolescent Psychiatrist with extensive Community and In-Patient experience working with young people and their families.

Allied Health Practitioners

Ms Valda Dorries is an Occupational Therapist and Psychotherapist with over 25 years professional practice experience working with children, young people and their families to deal better with emotional distress and behavioural difficulties affecting their daily lives.

Mr Tom O'Brien is a Clinical Social Worker with over 30 years professional practice experience. His professional interests focus on assisting adults with concerns about young people, and on assisting youth and young adults coping with life challenges.

Ms Jan Boulton is a Certified Practising Speech Pathologist and Education Consultant with professional experience spanning over 20 years. Her professional interests focus on improving communication skills for children, young people, parents/carers and families with communication, behavioural, and/or social-emotional needs.

REFERRAL

Medical Specialists

Patients require a referral from their GP or treating doctor. This referral must be presented at the first appointment.

Allied Health Practitioners

Patients may self-refer or be referred by a GP, medical specialist, or health professional. Referrals must be presented at the first appointment.

To access Medicare rebates, patients must be referred by their GP in the context of a GP Mental Health Care Plan, or by their private psychiatrist or paediatrician.

Patients with private health insurance should check referral requirements and eligibility for private health insurance rebates with their fund.

FEES

Medical Specialists

Fees are set by the private practitioner.

Full fees are payable at time of consultation.

Medicare rebates may then be claimed if eligible. Contact Kids in Mind Private Clinic Reception for further information.

Allied Health Practitioners

Fees are set by the private practitioner.

Full fees are payable at time of consultation.

Medicare or health fund rebates may then be claimed if eligible. Contact Kids in Mind Private Clinic Reception for further information.