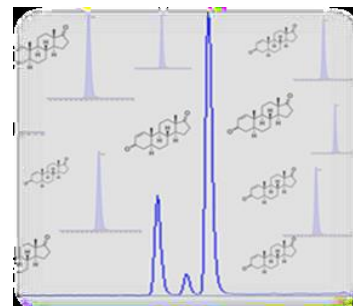


Sex Steroid Panel by Liquid Chromatography-Tandem Mass Spectrometry (LC-MS/MS)

Mater Pathology is now routinely measuring the following steroid hormones by tandem mass spectrometry (the gold standard in steroid testing) in plasma or serum:

- Testosterone (sensitive to <0.1 nmol/L)
- Androstenedione
- 17- Hydroxyprogesterone
- DHEAS
- Oestradiol (sensitive to 3.6 pmol/L) on request

Androgen
Profile



- Suitable for men, children, post-menopausal women and oncology patients

What you need to know:

- For the effective diagnosis of PCOS and related disorders (as per Evidence based guidelines for PCOS in Australia 2015), all 4 androgens will be measured.
- We ask that you request all clinically relevant androgens for your patient.*
- Please request 'Ultrasensitive Oestradiol' for the tandem mass spectrometry oestradiol assay.
- The recommended collection time for testosterone is in the early morning.
- For the investigation of PCOS, early follicular phase is the best time to collect an androgen profile.

These tests are Medicare rebatable

Compared to traditional methods of measuring steroids (immunoassay) the method used at Mater Pathology is much less susceptible to interference from drugs and only measures the specific steroids without measuring other steroids with similar structures. This provides a more ACCURATE and SENSITIVE result allowing confident clinical decision making.

**For further information please phone Dr Tony Huynh or Dr Oliver Treacy
(Chemical Pathologists) on 3163 8500.**